

GF08 INDOOR RESIDUAL SPRAYING

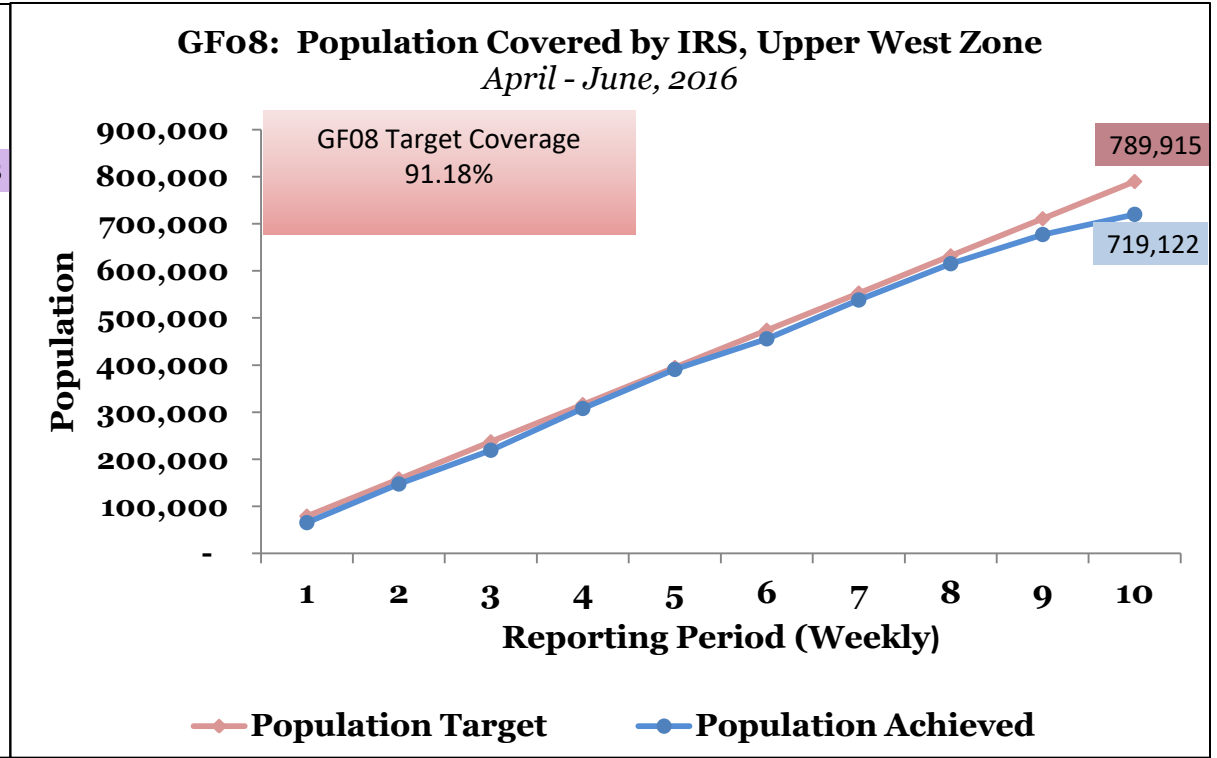
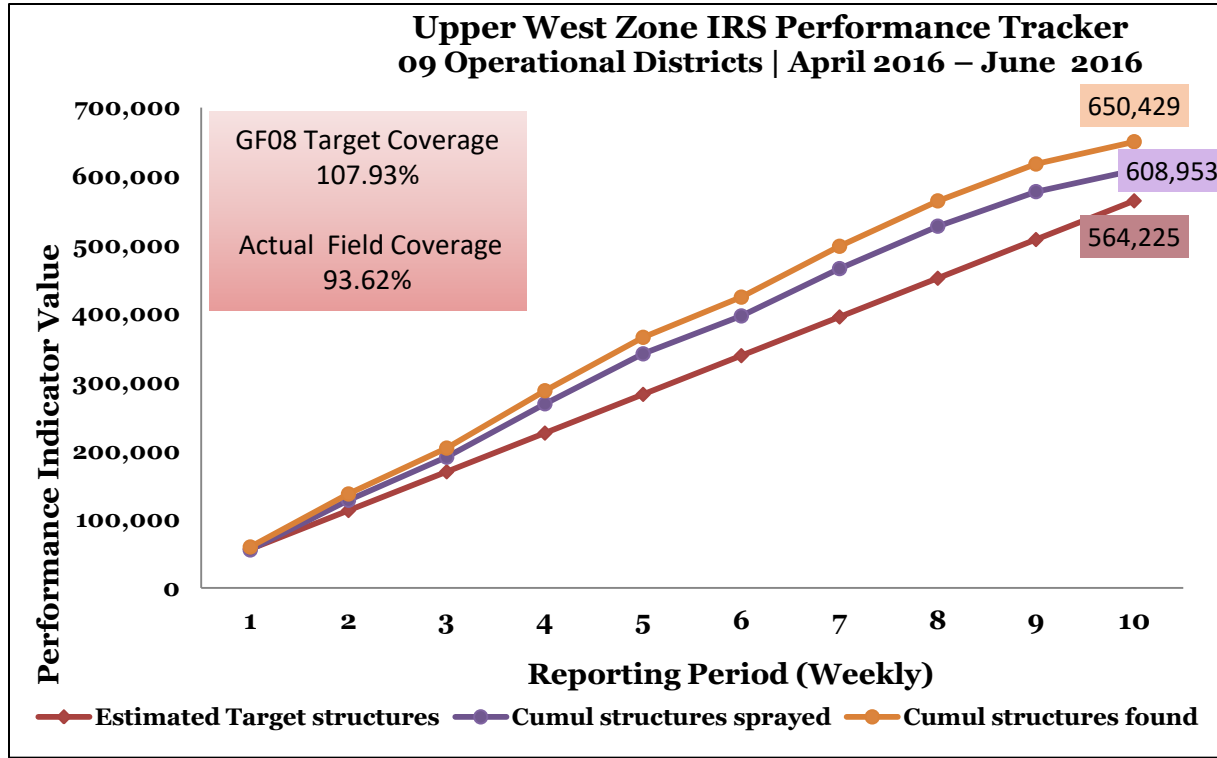
OSDV REPORT

April - June, 2016

Summary

- IRS Operations being conducted only in the Upper West Region.
- Nine (9) operational districts contributing to the overall performance.
- The districts involved in the operations are; Jirapa, Lambussie, Lawra, Nadowli, Sissala East, Sissala West, Wa East, Wa Municipal, and Wa West.
- IRS operations spanning a period of 10 weeks
 - Start of Operations: 18th April, 2016
 - End of Operations : 24th June, 2016
- GF08 data is being captured by both MISS and IRS Master Tracker
- NFM targeted Structures and Population are 564,225 and 789,915 respectively.

Upper West Zonal Tracker

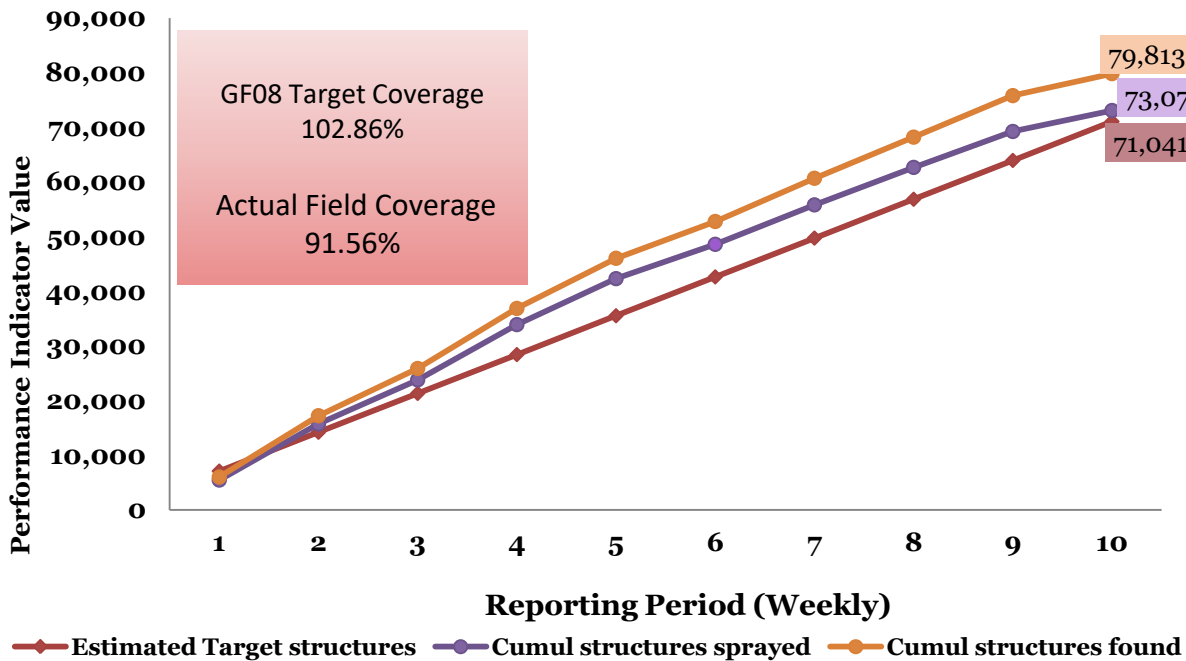


- At the end of the season, 93.62% field coverage was achieved.
- GF target coverage achieved was 107.93%.
- At the end of the season, the total number of can refills made was 98,610L

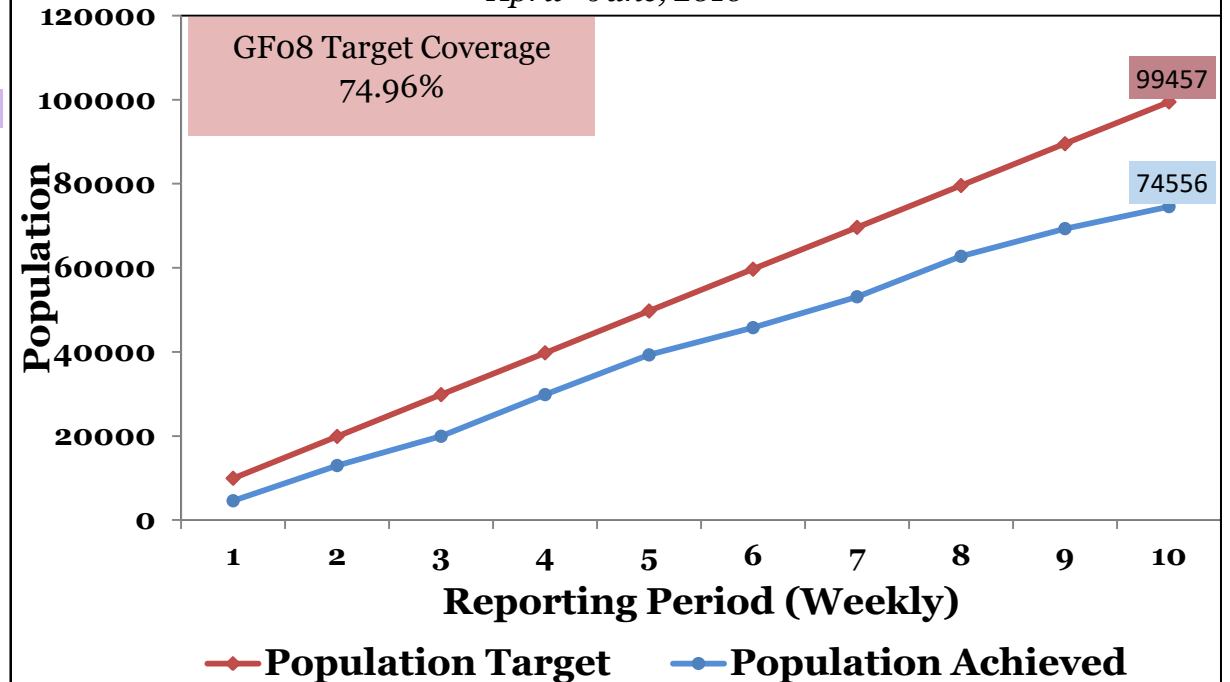
- At the end of the season, the population covered in the zone was 719,122 (49.33% males and 50.67% females). Thus 91.04% of GF total population (N=789,915) targeted for IRS was covered.
- Out of a total of 364,944 females covered by IRS, 3.20% were pregnant
- 12.94% of the total population covered was under the age of 5 years

Jirapa

**Upper West Zone IRS Performance Tracker
Jirapa District | April 2016 - June 2016**



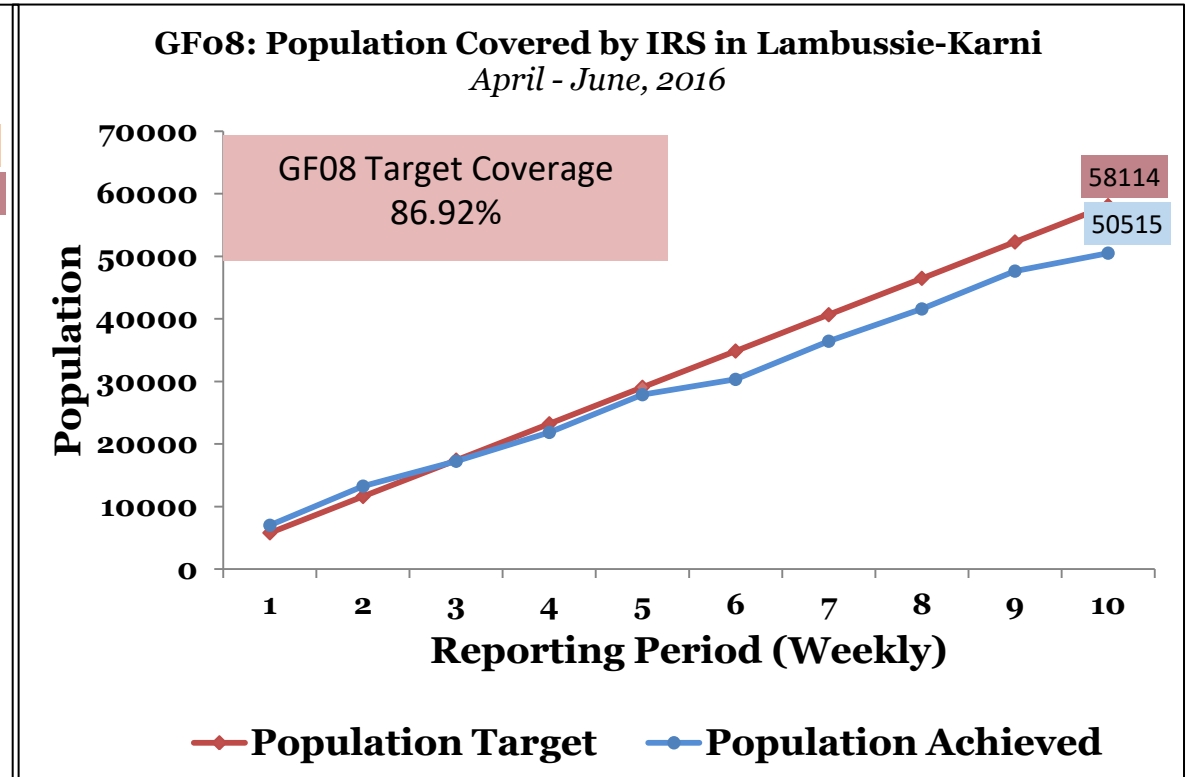
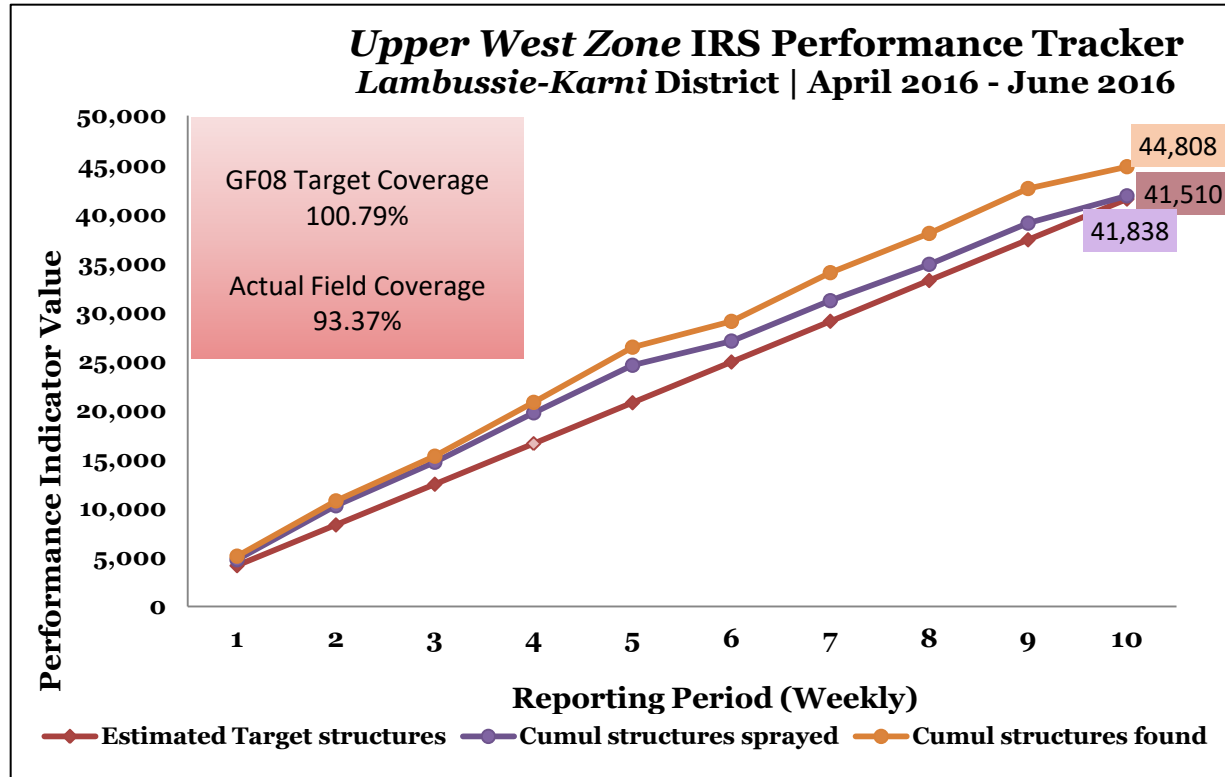
**GF08: Population Covered by IRS in Jirapa District
April - June, 2016**



- At the end of the season, 91.56% field coverage was achieved.
- GF target coverage achieved was 102.86%.
- At the end of the season, the total number of can refills made was 11,876L

- At the end of the season, the population covered in the district was 74,556 (47.91% males and 52.09% females). Thus 74.96% of GF total population (N=99,457) targeted for IRS was covered in the district.
- Out of a total of 38,837 females covered by IRS, 2.72% were pregnant
- 11.15% of the total population covered was under the age of 5 years

Lambussie Karnie

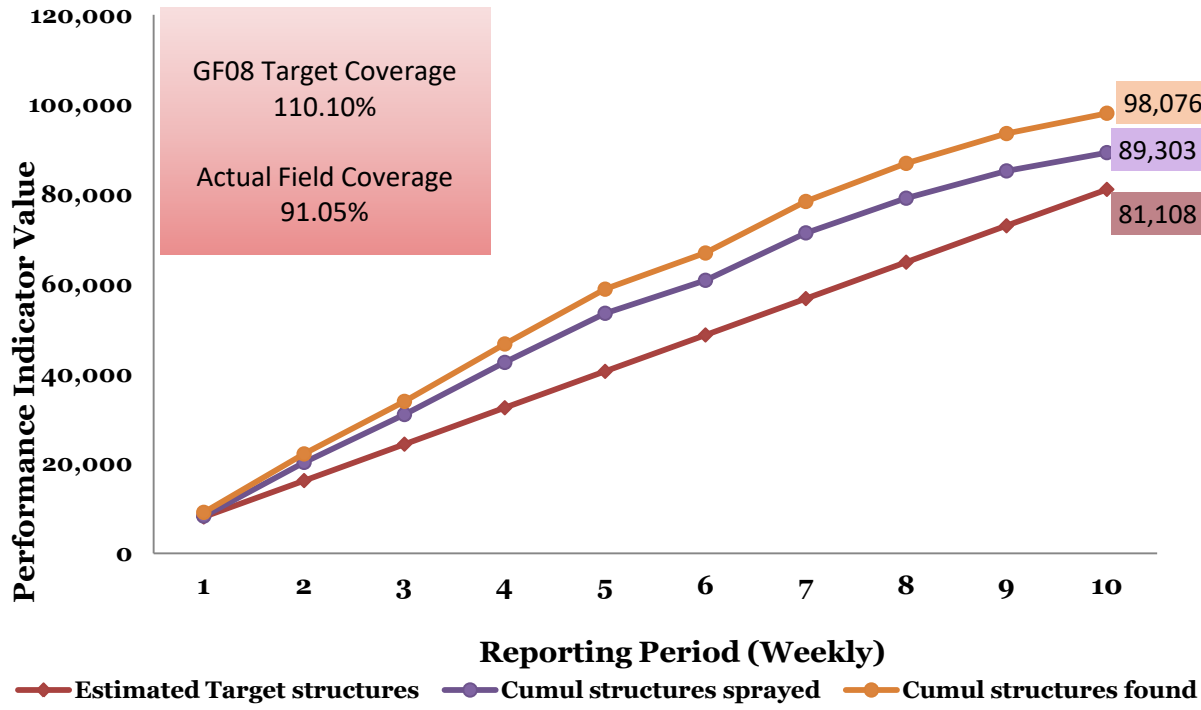


- At the end of the season, 93.37% field coverage was achieved.
- GF target coverage achieved was 100.79%.
- At the end of the season, the total number of can refills made was 7,042L

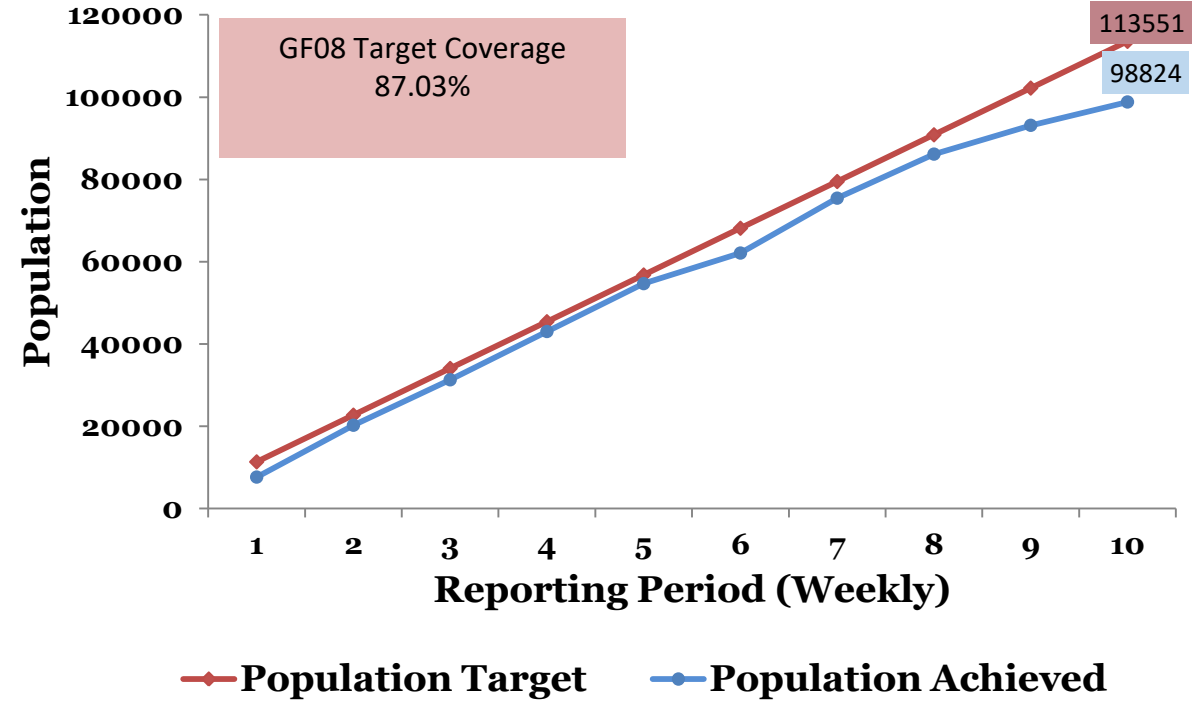
- At the end of the season, the population covered in the district was 50,515 (49.09% males and 50.91% females). Thus 86.92% of GF total population (N=58,114) targeted for IRS was covered in the district.
- Out of a total of 25,715 females covered by IRS, 3.43% were pregnant.
- 12.61% of the total population covered was under the age of 5 years

Lawra

Upper West Zone IRS Performance Tracker
Lawra District | April 2016 - June 2016



GF08: Population Covered by IRS in Lawra
April - June, 2016

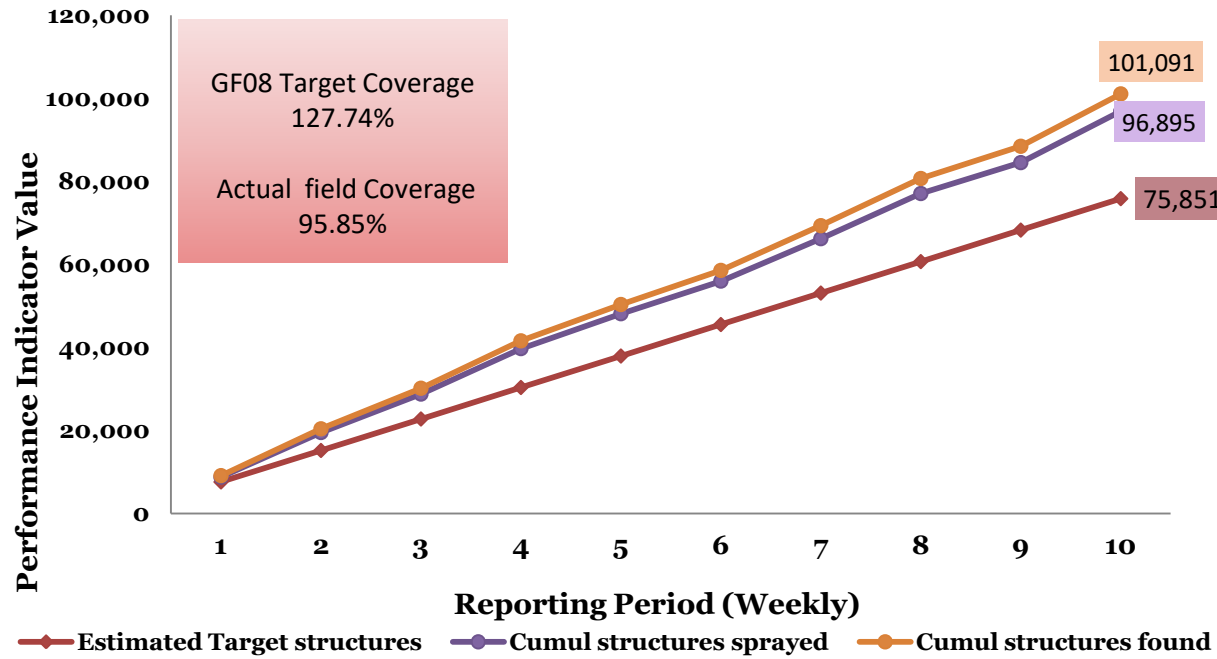


- At the end of the season, 91.05% field coverage was achieved.
- GF target coverage achieved was 110.10%.
- At the end of the season, the total number of can refills made was 14,640L

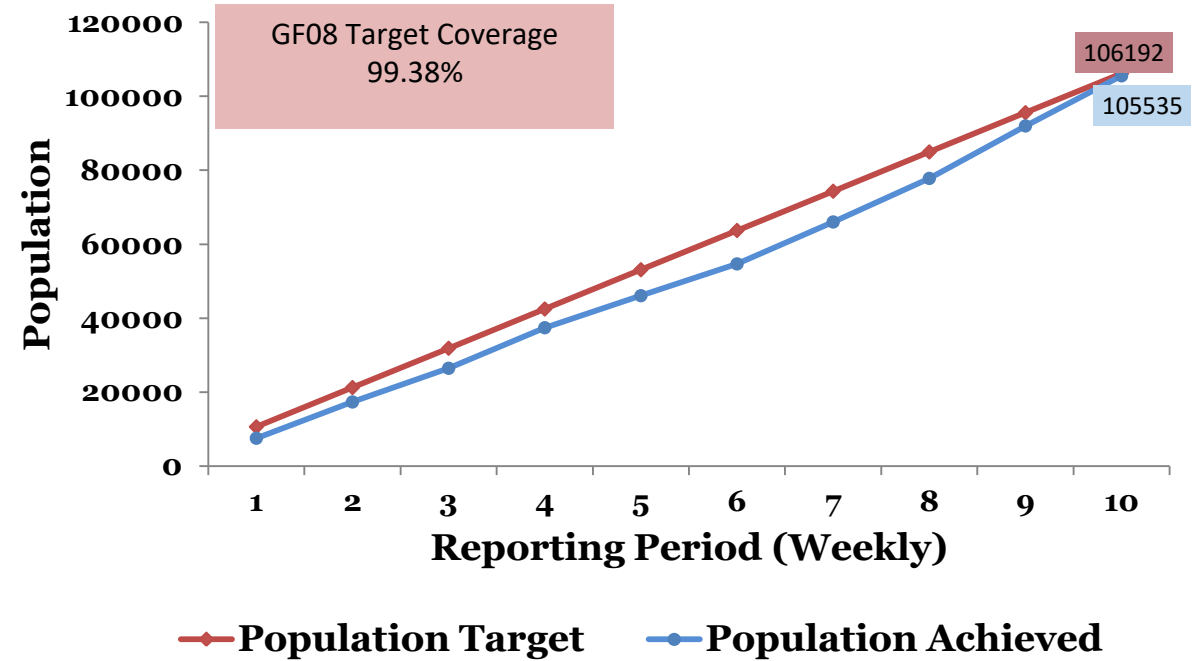
- At the end of the season, the population covered in the district was 98,824 (51.01% males and 48.99% females). Thus 87.03% of GF total population (N=113,551) targeted for IRS was covered in the district.
- Out of a total of 48,410 females covered by IRS, 2.30% were pregnant
- 10.76% of the total population covered was under the age of 5 years

Nadowli

Upper West Zone IRS Performance Tracker
Nadowli District | April 2016 – June 2016



GF08: Population Covered by IRS in Nadowli District
April - June, 2016

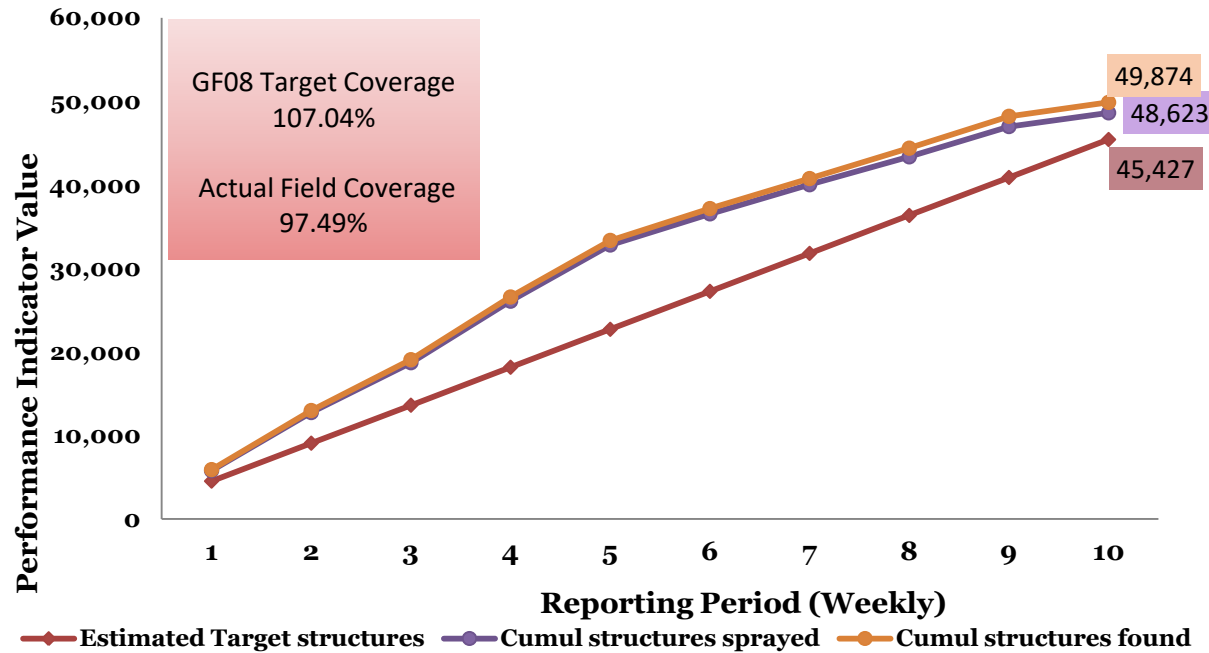


- At the end of the season, 95.84% field coverage was achieved.
- GF target coverage achieved was 127.74%.
- At the end of the season, the total number of can refills made was 15,628L

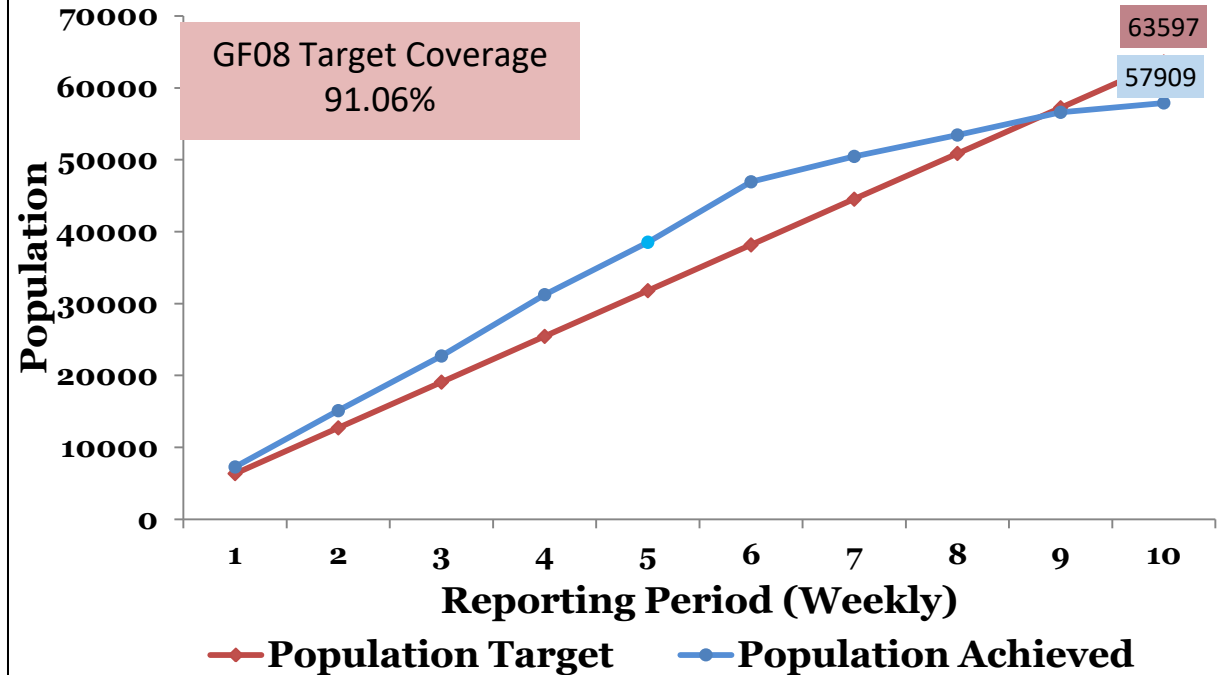
- At the end of the season, the population covered in the district was 105,535 (50.01% males and 49.99% females). Thus 99.38% of GF total population (N=106,192) targeted for IRS was covered in the district.
- Out of a total of 52,760 females covered by IRS, 3.06% were pregnant.
- 11.90% of the total population covered was under the age of 5 year

Sissala East

Upper West Zone IRS Performance Tracker
Sissala East District | April 2016 – June 2016



GF08: Population Covered by IRS in Sissala East District
April - June, 2016

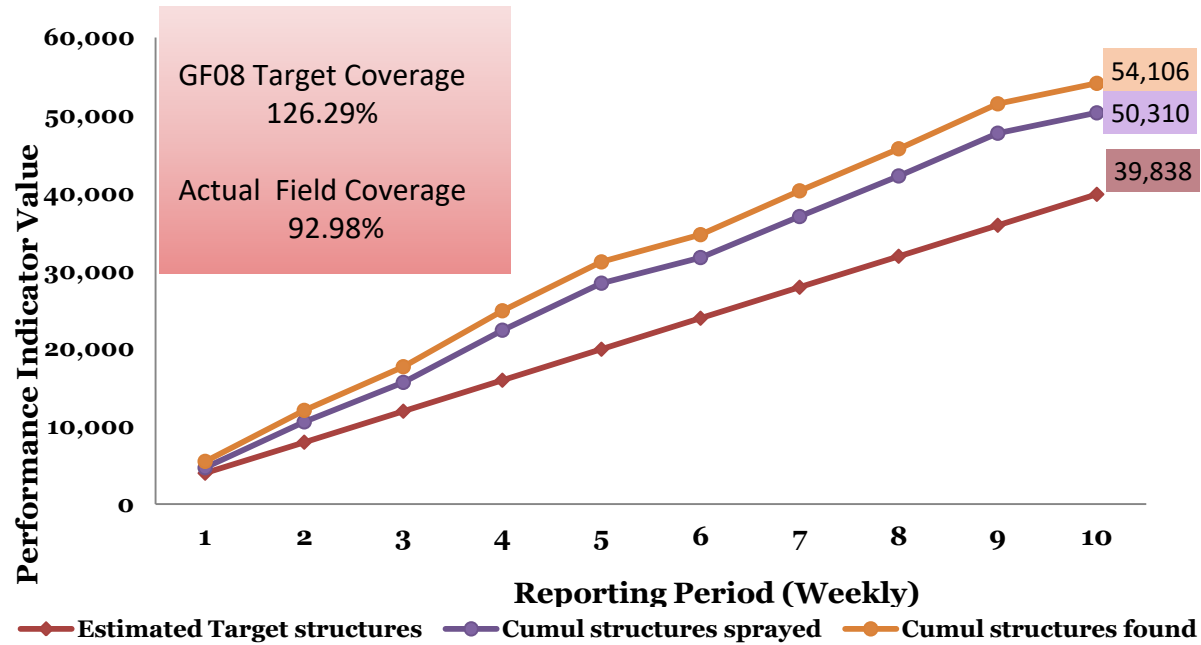


- At the end of the season, 97.49% field coverage was achieved.
- GF target coverage achieved was 107.04%.
- At the end of the season, the total number of can refills made was 7,229L

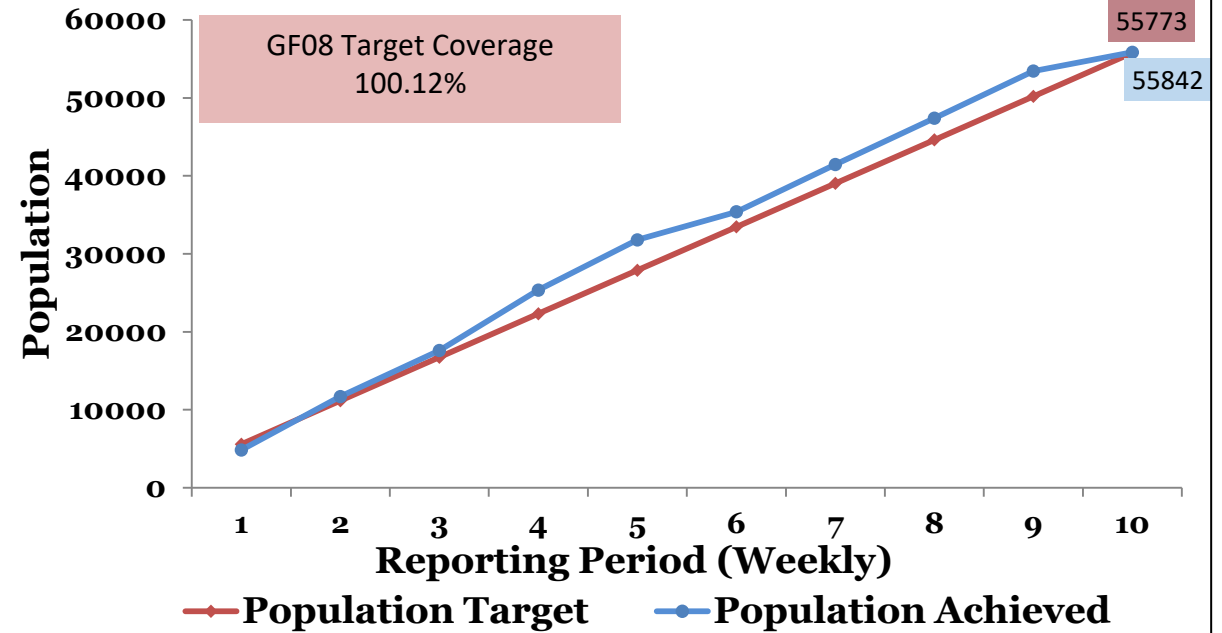
- At the end of the season, the population covered in the district was 57,909 (47.16% males and 52.84% females). Thus 91.06% of GF total population (N=63,597) targeted for IRS was covered in the district.
- Out of a total of 30,600 females covered by IRS, 3.77% were pregnant.
- 16.06% of the total population covered was under the age of 5 years

Sissala West

Upper West Zone IRS Performance Tracker
Sissala West | April 2016 - June 2016



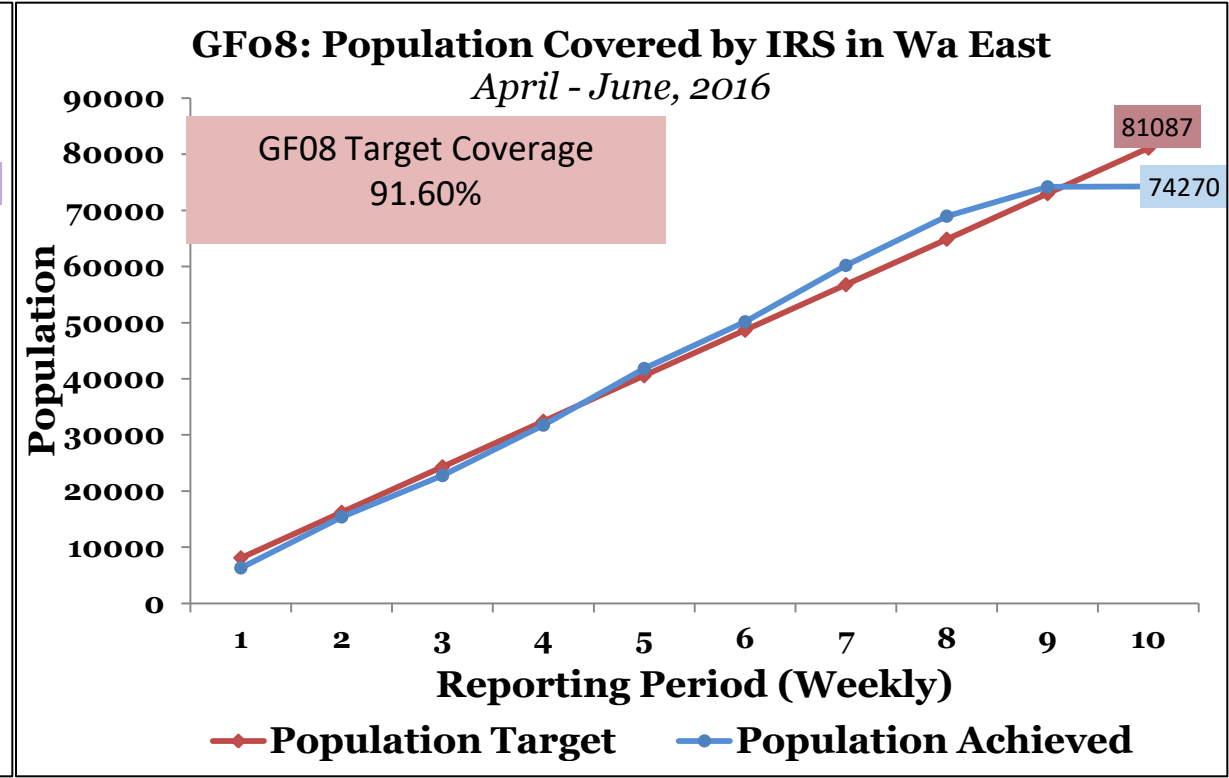
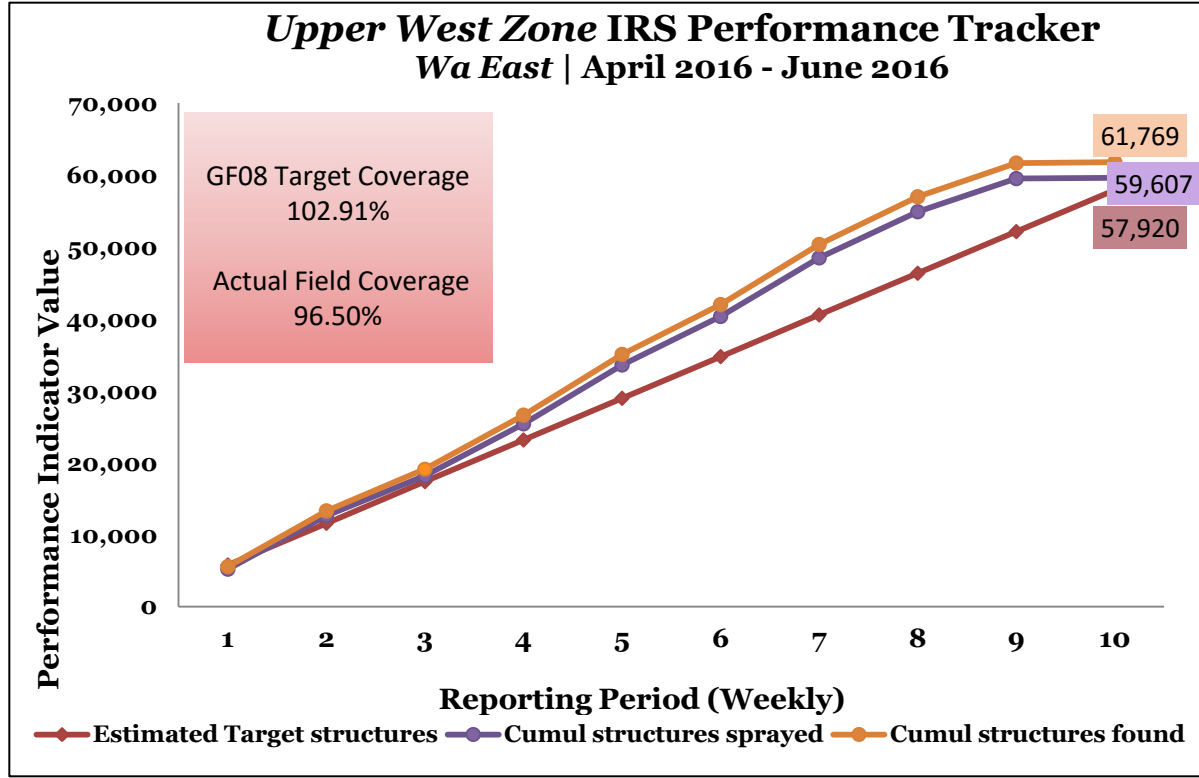
GF08: Population Covered by IRS in Sissala West
April - June, 2016



- At the end of the season, 92.98% field coverage was achieved.
- GF target coverage achieved was 126.29%.
- At the end of the season, the total number of can refills made was 9,201L

- At the end of the season, the population covered in the district was 55,842 (49.87% males and 50.13% females). Thus 100.12% of GF total population (N=55,773) targeted for IRS was covered in the district.
- Out of a total of 27,994 females covered by IRS, 3.74% were pregnant
- 14.96% of the total population covered was under the age of 5 years

Wa East

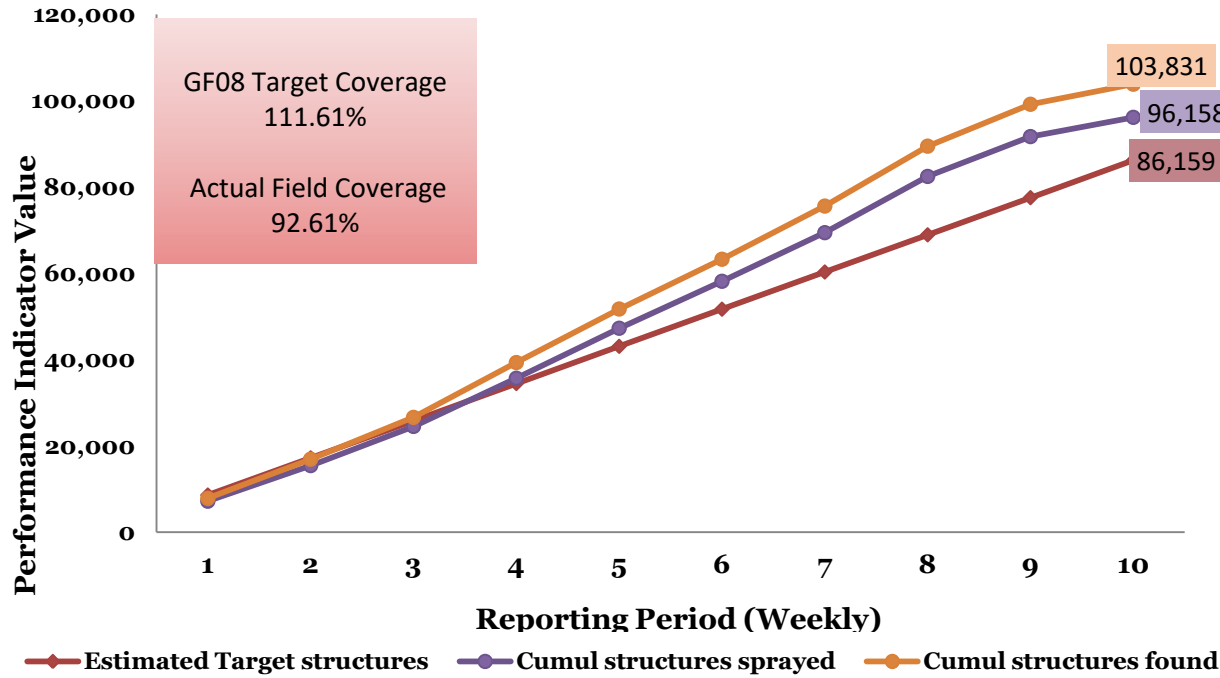


- At the end of the season, 96.50% field coverage was achieved.
- GF target coverage achieved was 102.91%.
- At the end of the season, the total number of can refills made was 9,206L

- At the end of the season, the population covered in the district was 74,270 (49.98% males and 50.02% females). Thus 91.60% of GF total population (N=81,087) targeted for IRS was covered in the district.
- Out of a total of 37,153 females covered by IRS, 3.68% were pregnant
- 13.78% of the total population covered was under the age of 5 years

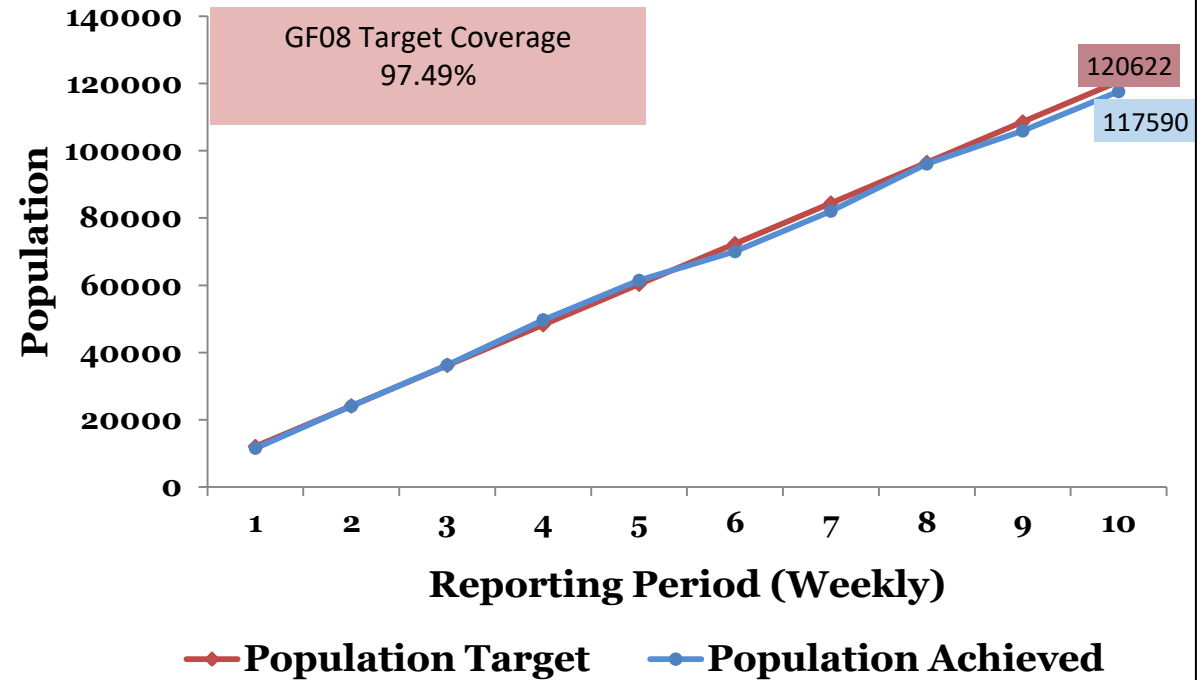
Wa Municipal

Upper West Zone IRS Performance Tracker
Wa Municipal | April 2016 - June 2016



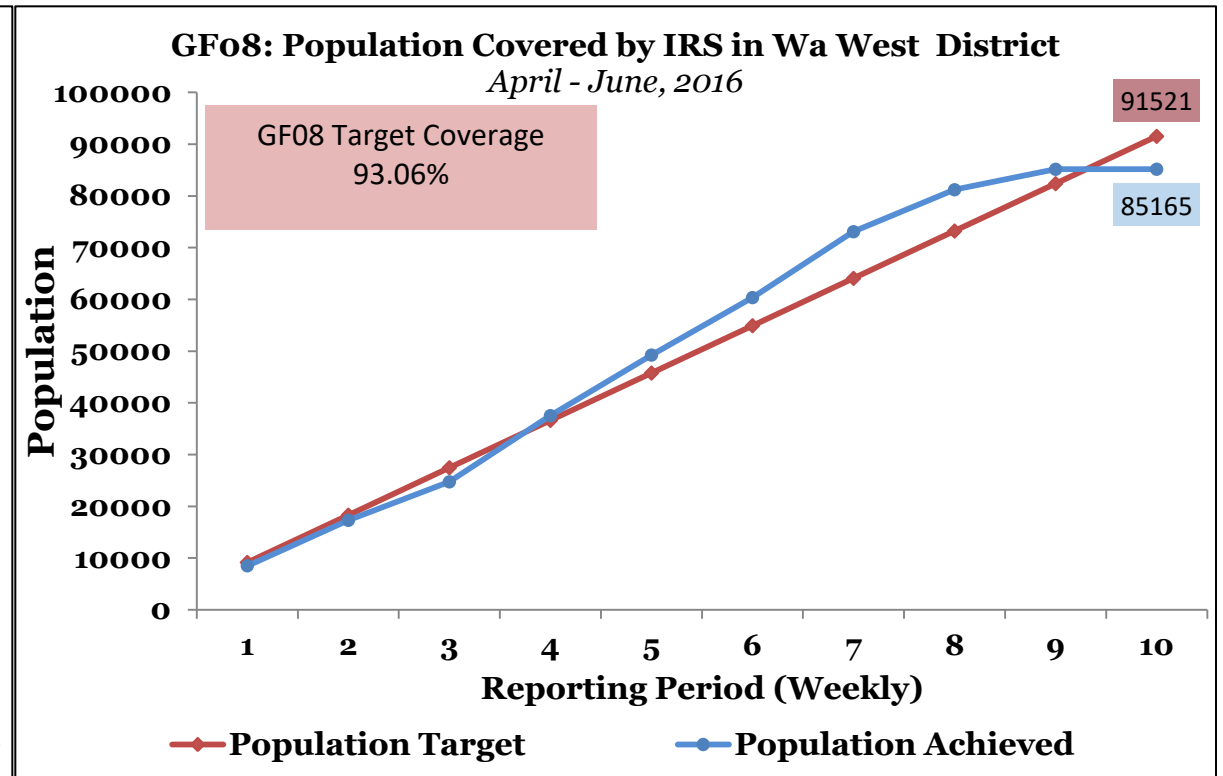
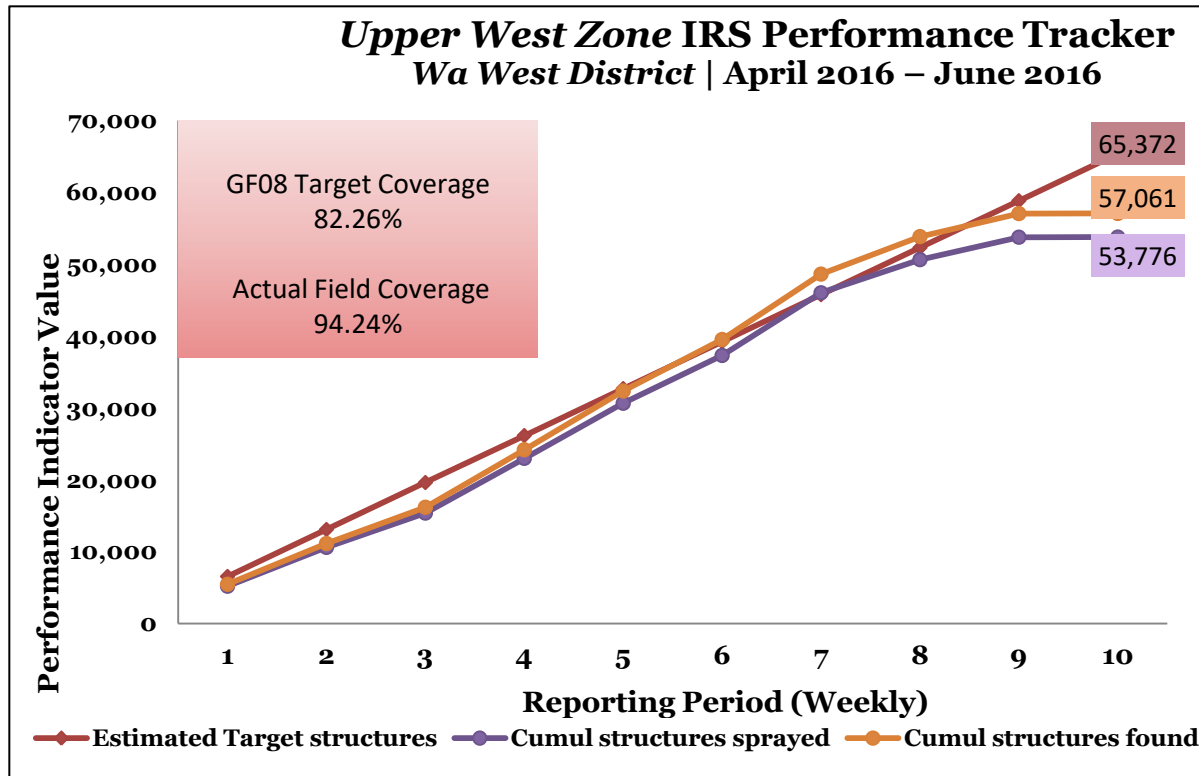
- At the end of the season, 92.61% field coverage was achieved.
- GF target coverage achieved was 111.61%.
- At the end of the season, the total number of can refills made was 15,046L

GF08: Population Covered by IRS in Wa Municipal
April - June, 2016



- At the end of the season, the population covered in the district was 117,590 (49.64% males and 50.36% females). Thus 97.49% of GF total population (N=120,622) targeted for IRS was covered in the district.
- Out of a total of 59,215 females covered by IRS, 3.38% were pregnant
- 13.61% of the total population covered was under the age of 5 years

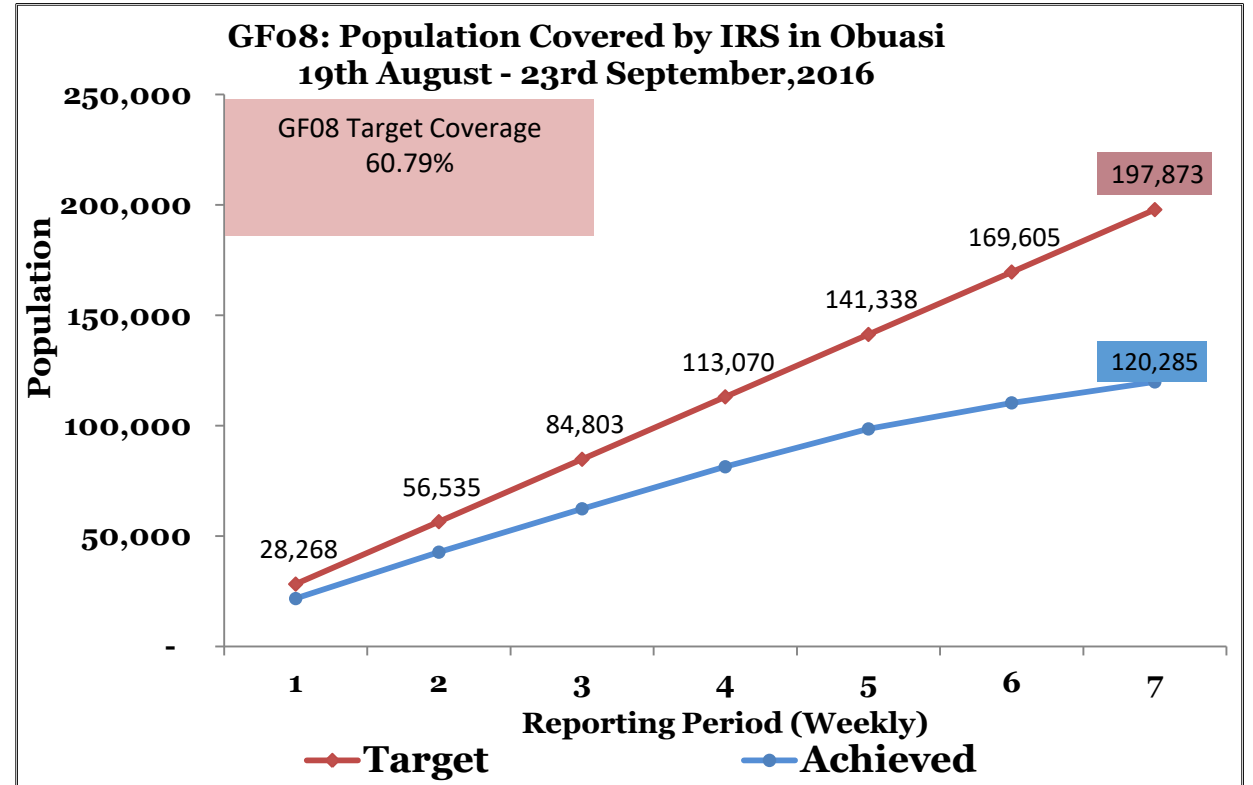
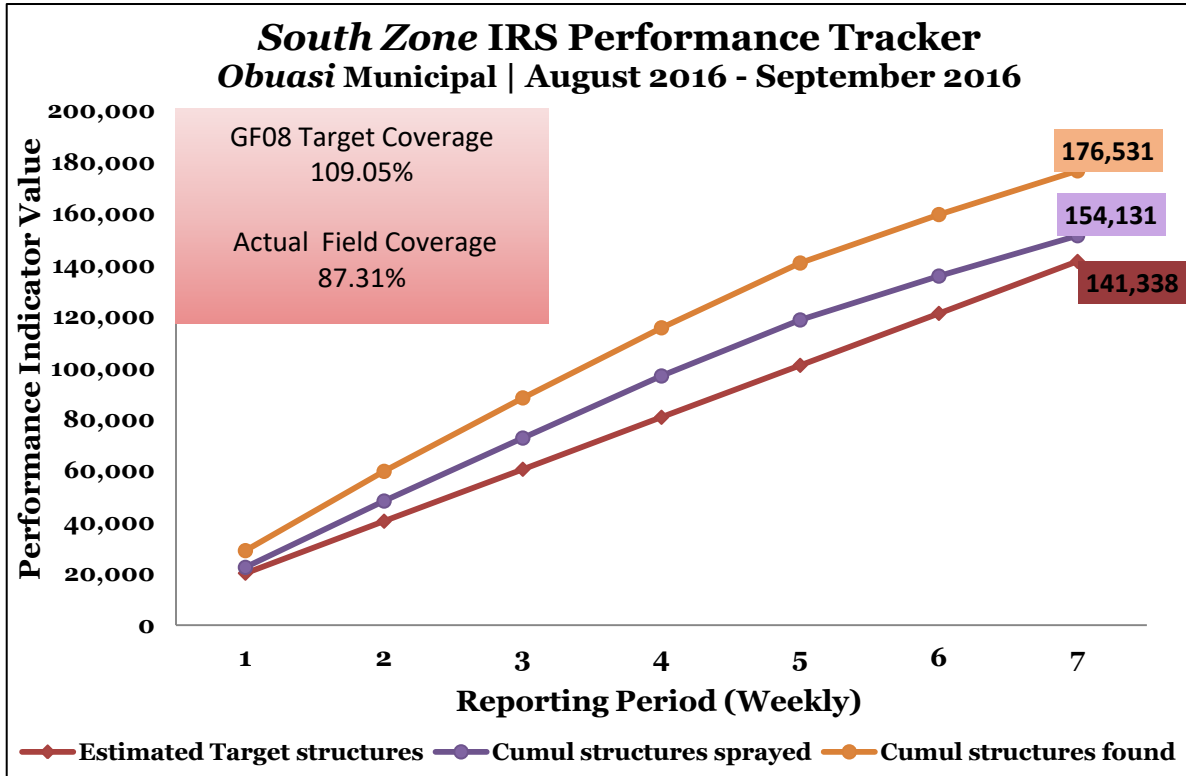
Wa West



- At the end of the season, 94.24% field coverage was achieved.
- GF target coverage achieved was 82.26%.
- At the end of the season, the total number of can refills made was 8,742L

- At the end of the season, the population covered in the district was 85,165 (48.03% males and 51.97% females). Thus 93.06% of GF total population (N=91,521) targeted for IRS was covered in the district.
- Out of a total of 44,260 females covered by IRS, 3.25% were pregnant.
- 13.43% of the total population covered was under the age of 5 years

Obuasi Municipal



- At the end of operations , 87.31% field coverage was achieved.
- GF target coverage achieved was 109.05%.
- The total number of can refills made was 22,518L

- The population covered in the district was 120,285 (48.49% males and 51.51% females). Thus 60.79% of GF total population (N=197,873) targeted for IRS was covered.
- Out of a total of 61,725 females covered by IRS, 7.70% were pregnant
- 9.32% of the total population covered was under the age of 5 years