

GF09 INDOOR RESIDUAL SPRAYING REPORT

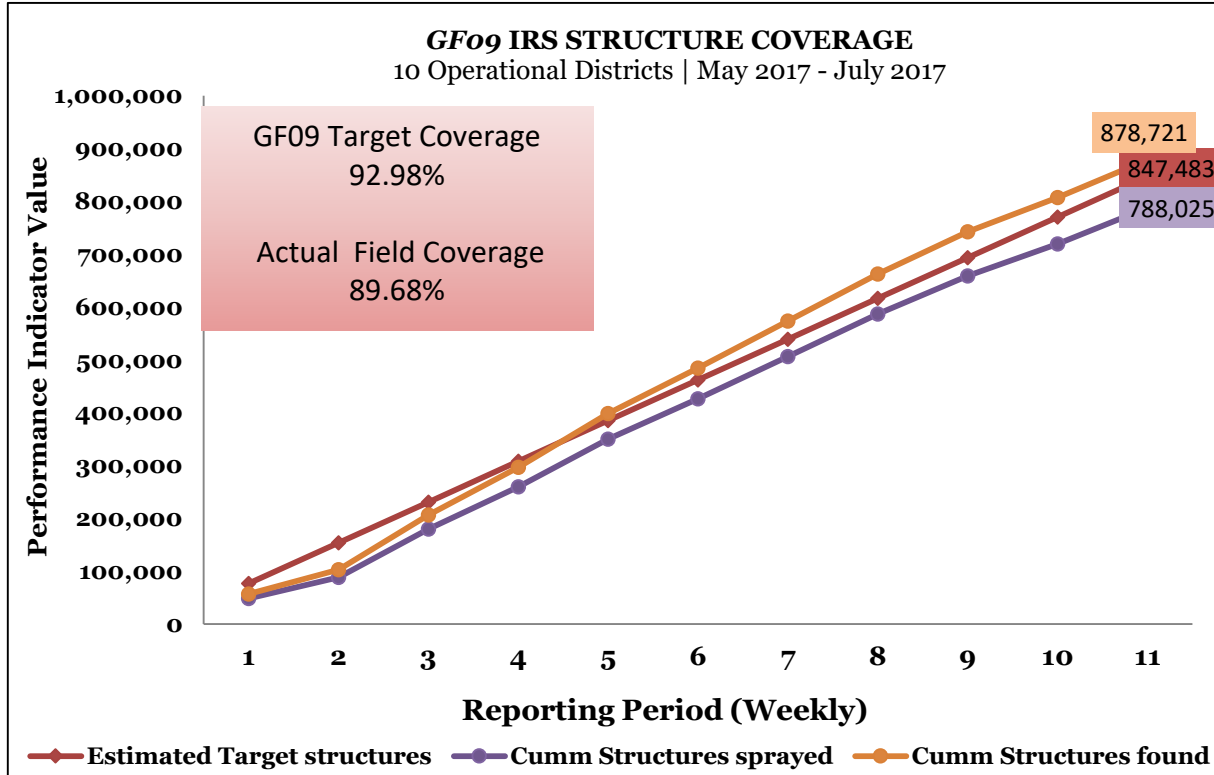
Final Performance After OSDV

May - July, 2017

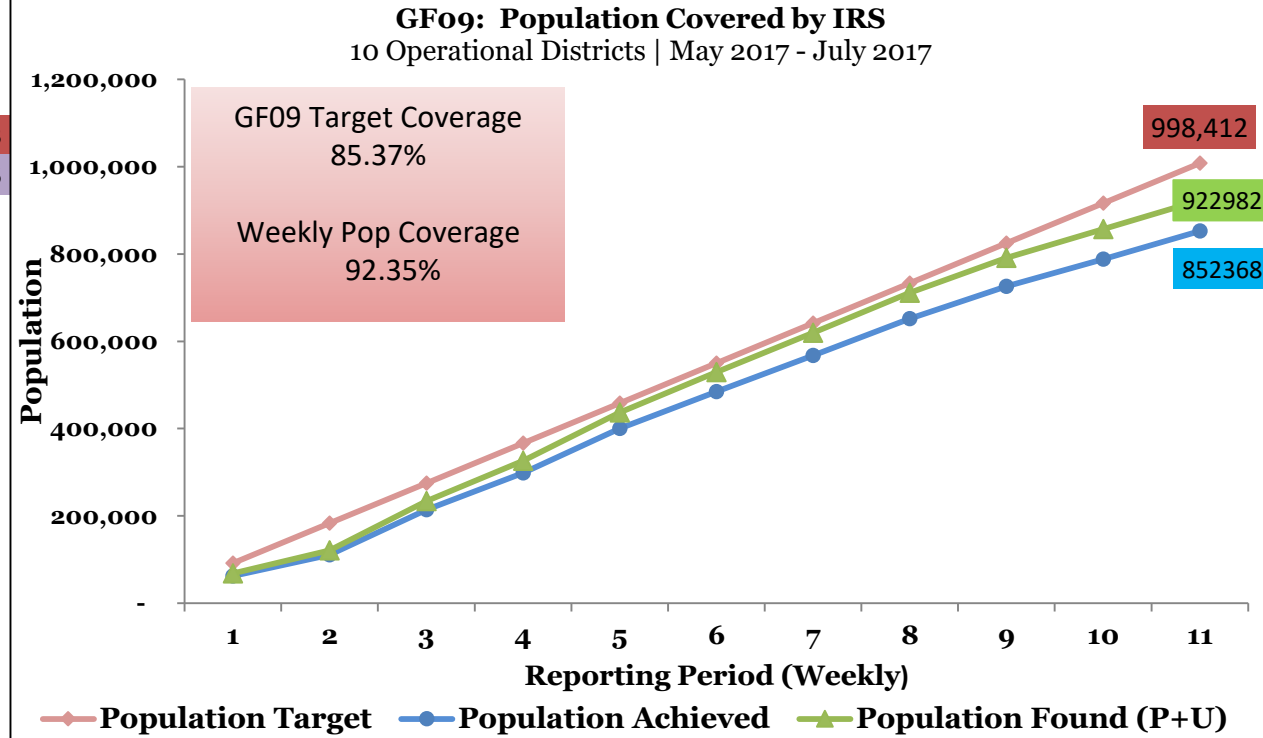
Summary

- IRS Operations being conducted in the Upper West Region and Obuasi Municipality.
- Ten (10) operational districts contributing to the overall performance.
- The districts involved in the operations are; Jirapa, Lambussie, Lawra, Nadowli, Sissala East, Sissala West, Wa East, Wa Municipal and Obuasi Municipal.
- IRS operations spanning a period of 12 weeks
 - Start of Operations: 2nd May, 2017
 - End of Operations : 24th July, 2017
- GF09 data is being captured by both MISS and IRS Master Tracker
- NFM targeted Structures and Population are 847,483 and 998,412 respectively.

National Output Summary

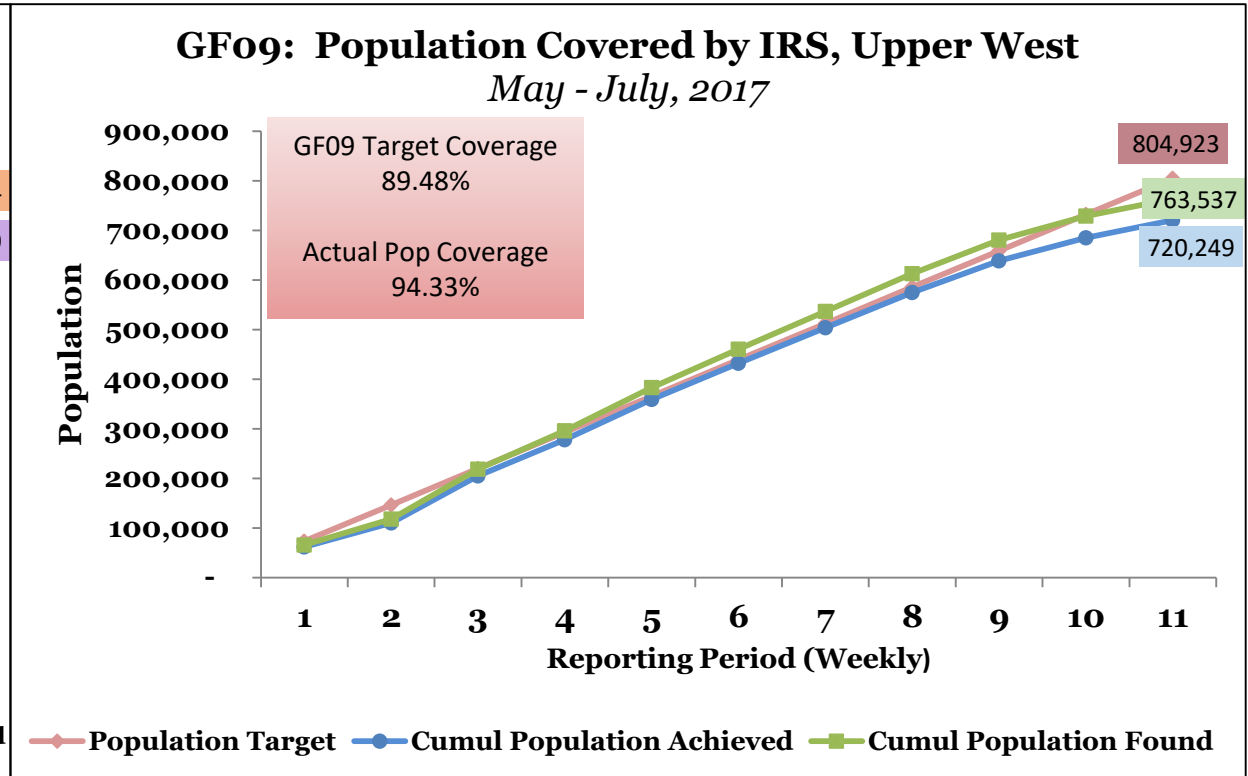
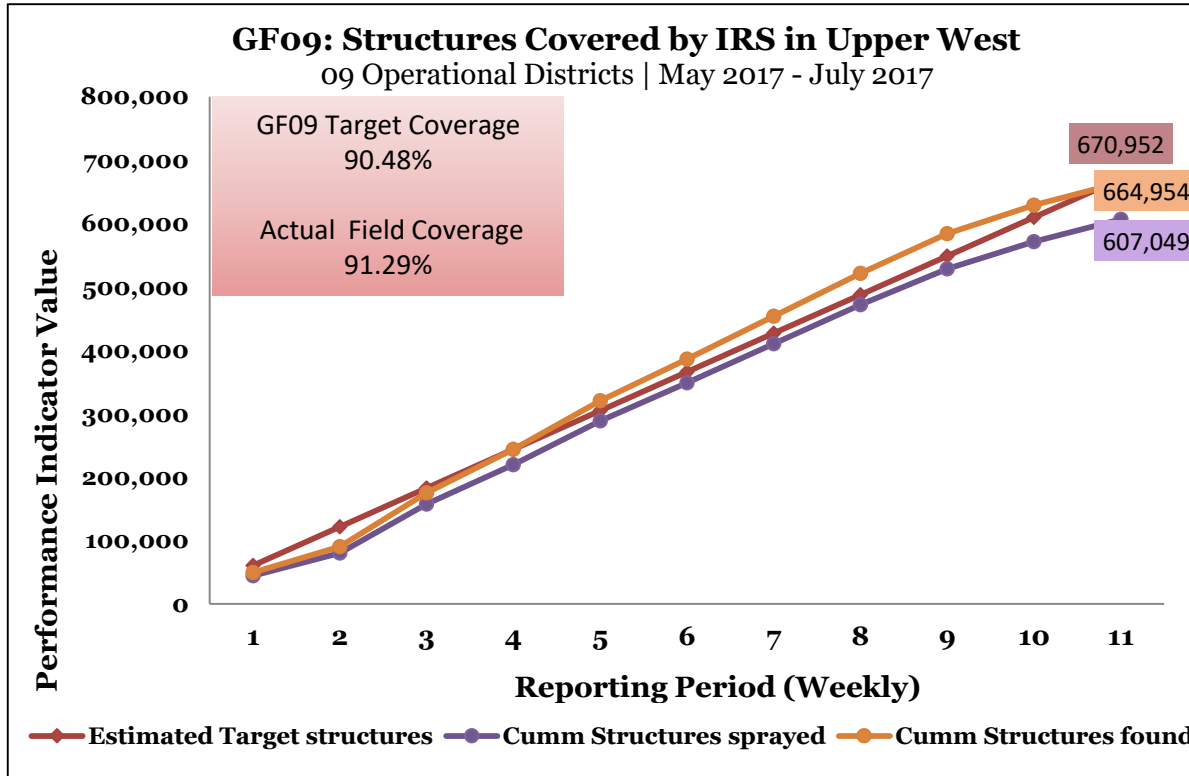


- At the end of the week, 89.68% field coverage was achieved.
- GF target coverage achieved was 92.98%.
- At the end of the week, the total number of can refills made was 125,378L



- At the end of the week, the population covered was 852,368 (49.09% males and 50.91% females). Thus 84.55% of GF total population (N=1,008,138) targeted for IRS was covered.
- Out of a total of 433,946 females covered by IRS, 2.88% were pregnant
- 12.82% of the total population covered was under the age of 5 years

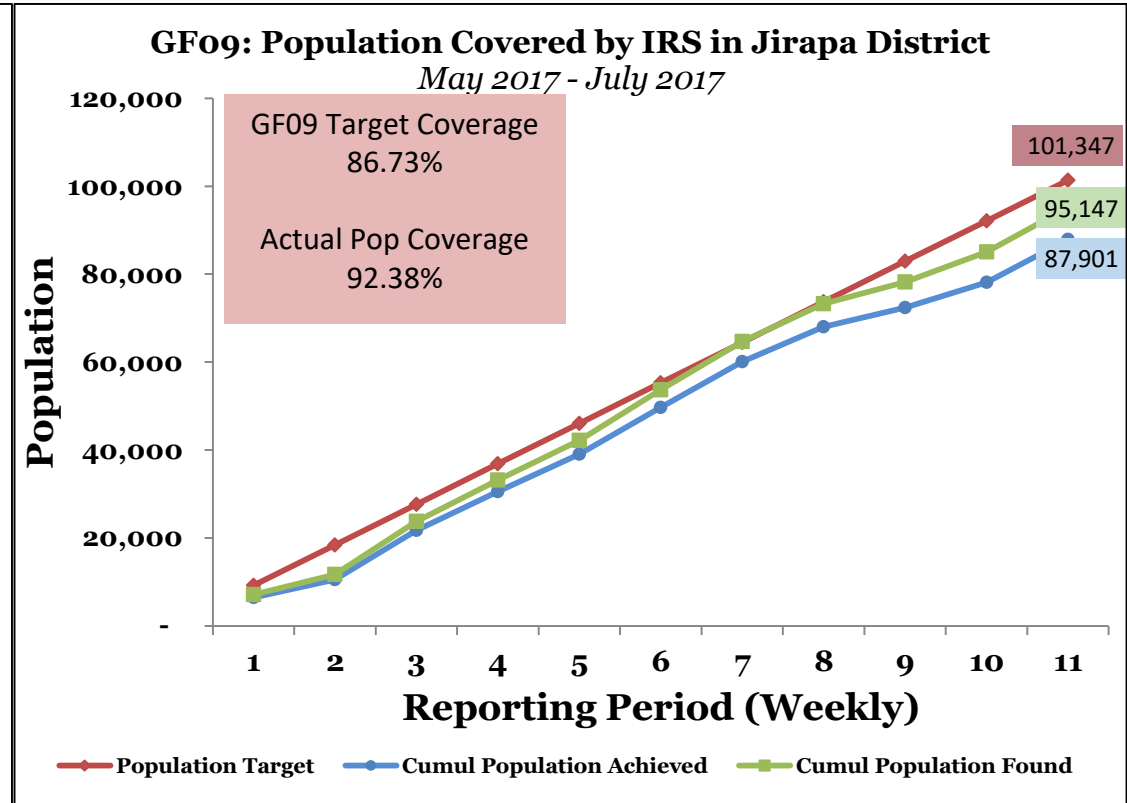
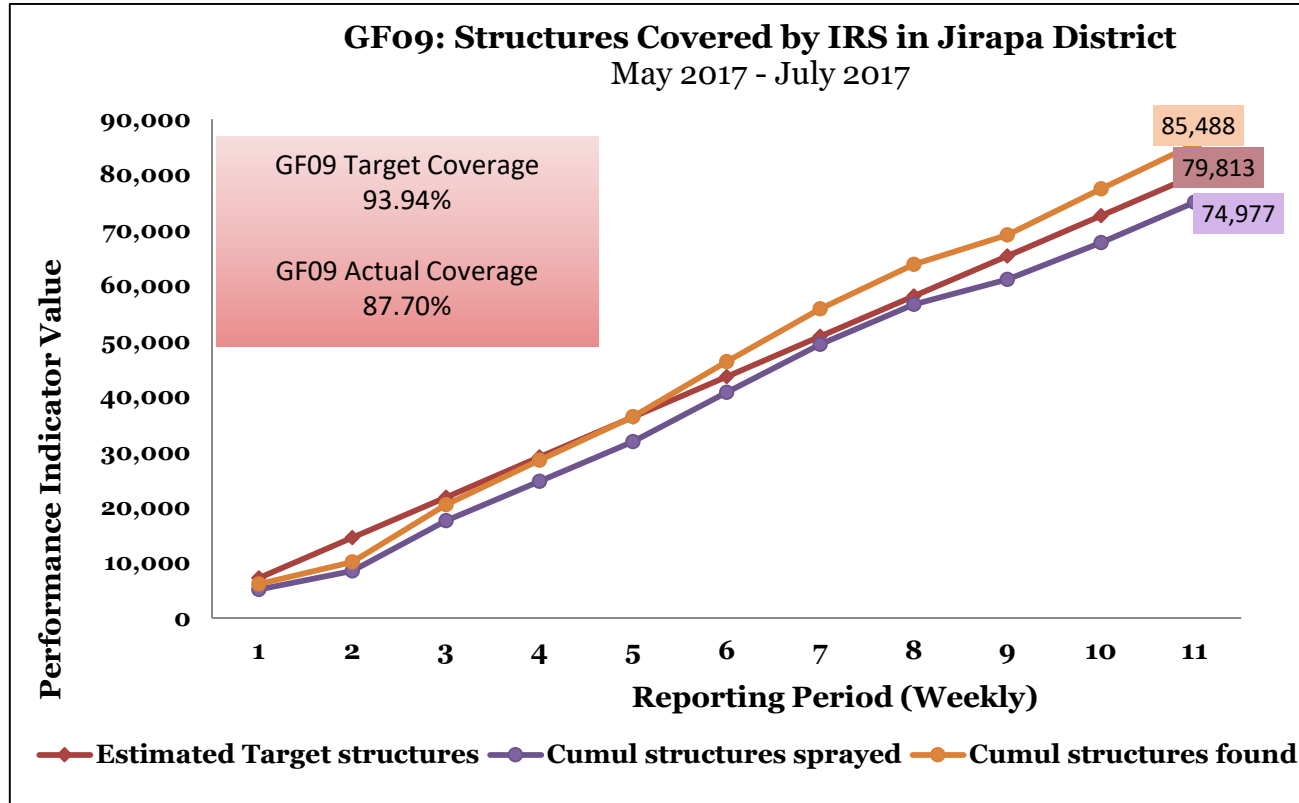
Upper West Zonal Tracker



- At the end of the season, 91.29% field coverage was achieved.
- GF target coverage achieved was 90.48%.
- At the end of the season, the total number of can refills made was 98,741L

- At the end of the season, the population covered in the zone was 720,249 (49.17% males and 50.83% females). Thus 89.48% of GF total population (N=804,923) targeted for IRS was covered.
- Out of a total of 366,088 females covered by IRS, 2.96% were pregnant
- 12.89% of the total population covered was under the age of 5 years

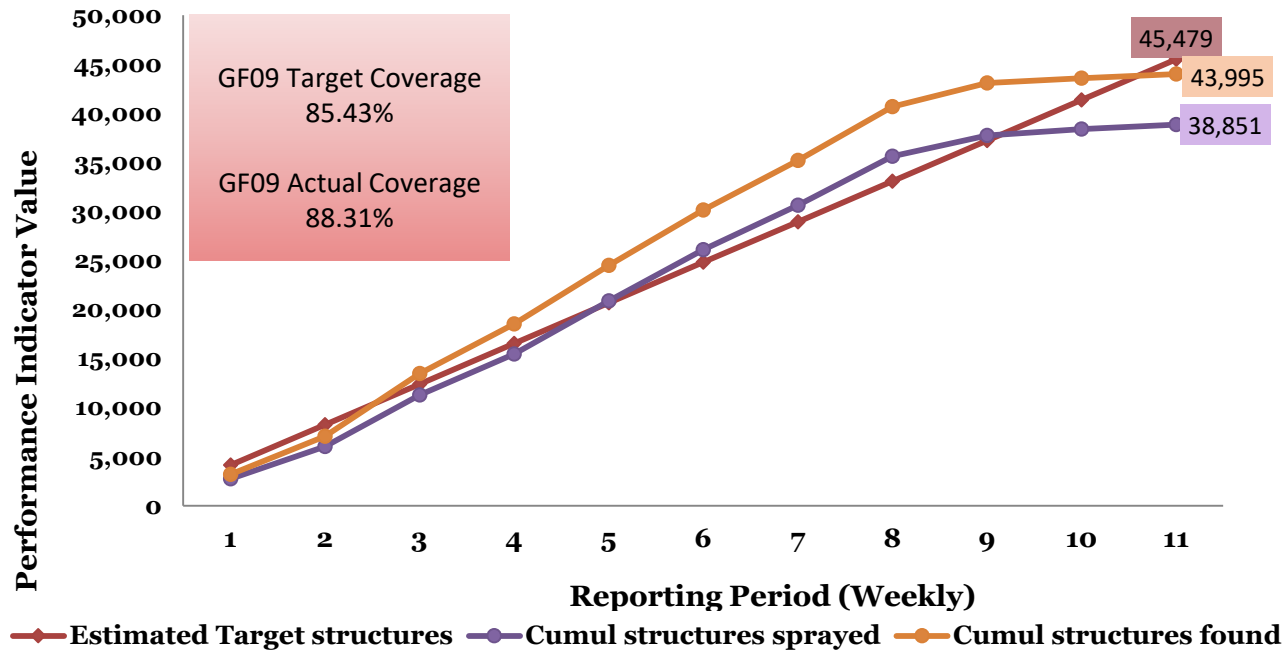
Jirapa



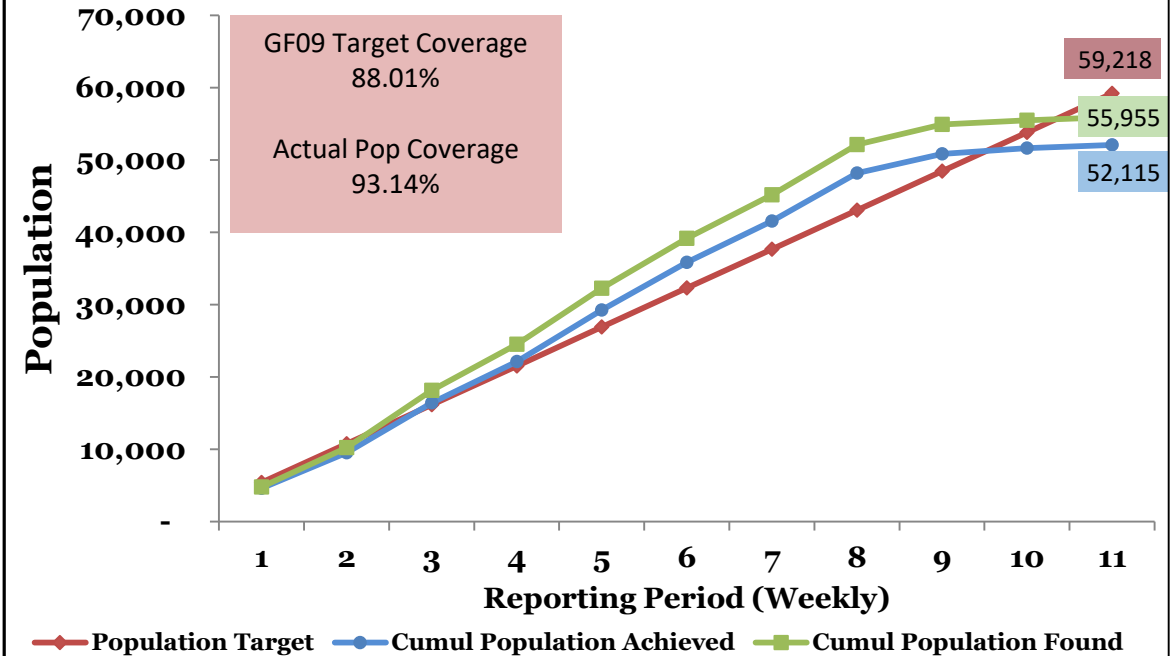
- At the end of the season, 87.70% field coverage was achieved.
- GF target coverage achieved was 93.94%.
- At the end of the season, the total number of can refills made was 11,930L
- At the end of the season, the population covered in the district was 87,901 (47.79% males and 52.21% females). Thus 86.73% of GF total population (N=101,347) targeted for IRS was covered in the district.
- Out of a total of 45,896 females covered by IRS, 2.34% were pregnant
- 11.12% of the total population covered was under the age of 5 years

Lambussie Karni

GF09: Structures Covered by IRS in Lambussie-Karni District
May 2017 - July 2017



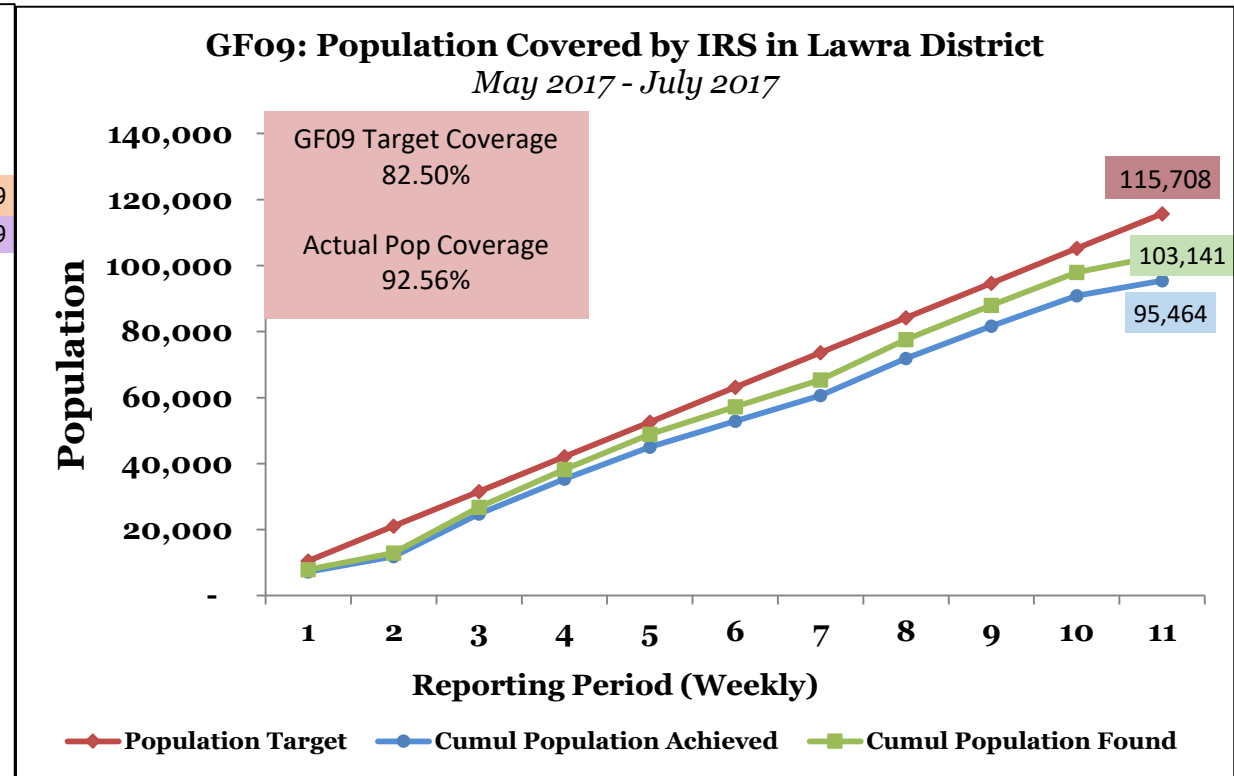
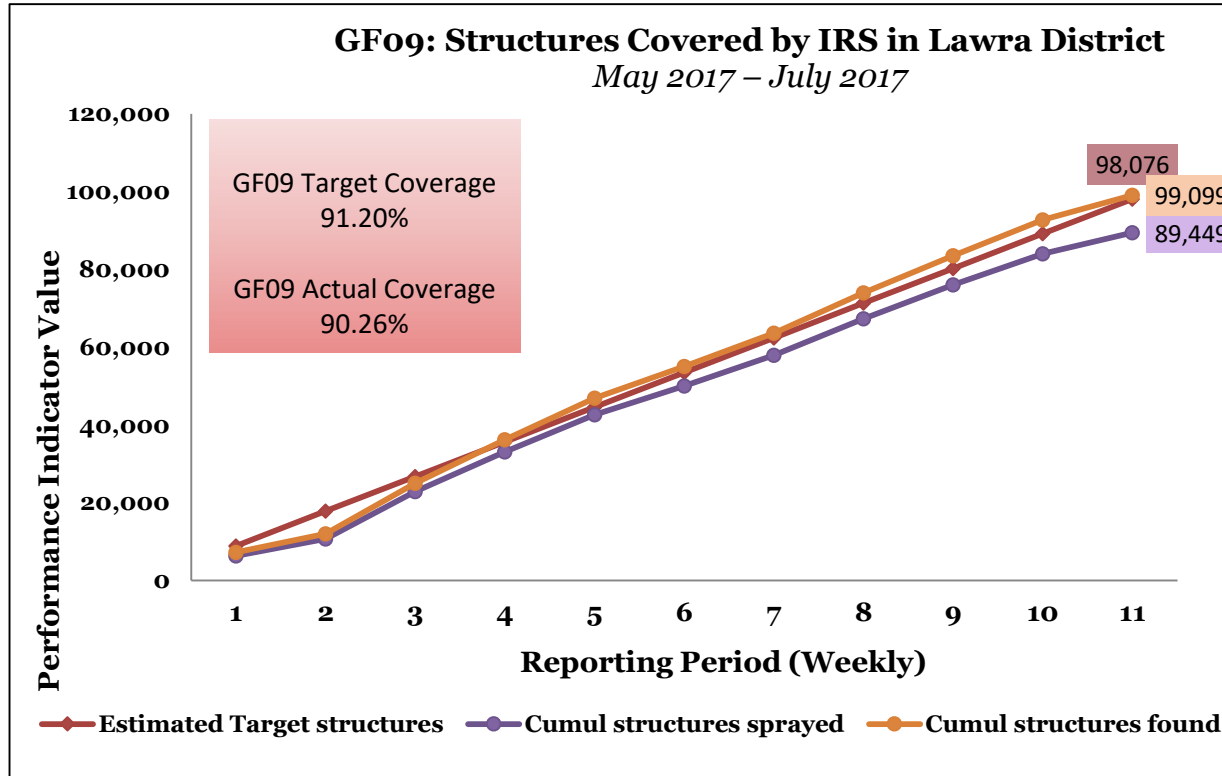
GF09: Population Covered by IRS in Lambussie Karni District
May 2017 - July 2017



- At the end of the season, 88.31% field coverage was achieved.
- GF target coverage achieved was 85.43%.
- At the end of the season, the total number of can refills made was 6,708L

- At the end of the season, the population covered in the district was 52,115 (50.03% males and 49.97% females). Thus 88.01% of GF total population (N=59,218) targeted for IRS was covered in the district.
- Out of a total of 26,043 females covered by IRS, 2.88% were pregnant.
- 12.71% of the total population covered was under the age of 5 years

Lawra

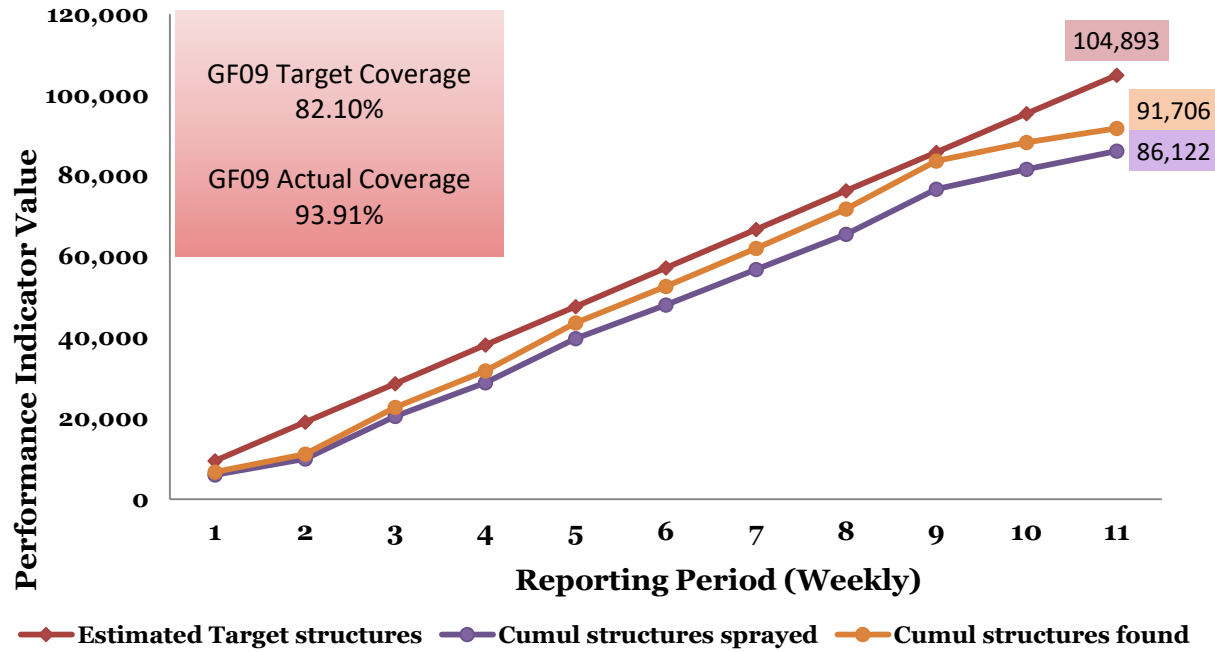


- At the end of the season, 90.26% field coverage was achieved.
- GF target coverage achieved was 91.20%.
- At the end of the season, the total number of can refills made was 14,769L

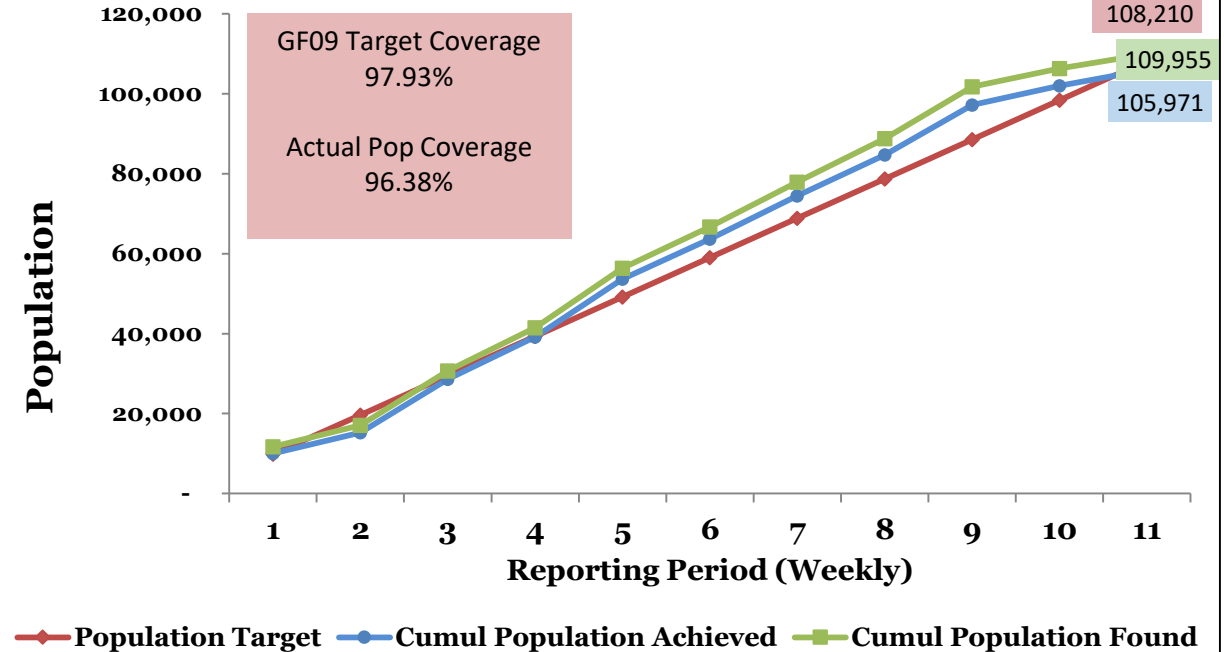
- At the end of the season, the population covered in the district was 95,464 (50.04% males and 49.96% females). Thus 82.50% of GF total population (N=115,708) targeted for IRS was covered in the district.
- Out of a total of 47,698 females covered by IRS, 2.32% were pregnant
- 10.32% of the total population covered was under the age of 5 years

Nadowli

GF09: Structures Covered by IRS in Nadowli District
May 2017- July 2017



GF09: Population Covered by IRS in Nadowli District
May 2017 - July 2017



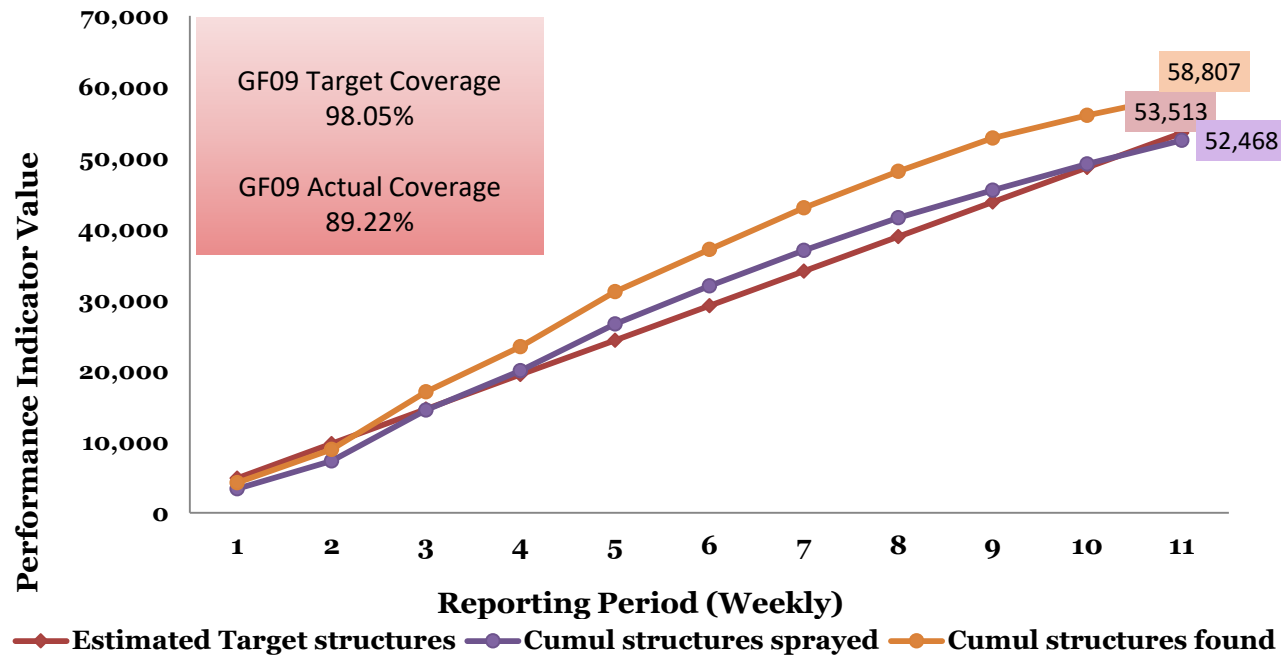
- At the end of the season, 93.91% field coverage was achieved.
- GF target coverage achieved was 82.10%.
- At the end of the season, the total number of can refills made was 14,816L

- At the end of the season, the population covered in the district was 105,971 (49.27% males and 50.73% females). Thus 97.93% of GF total population (N=108,210) targeted for IRS was covered in the district.
- Out of a total of 53,755 females covered by IRS, 3.02% were pregnant.
- 12.67% of the total population covered was under the age of 5 years

Sissala East

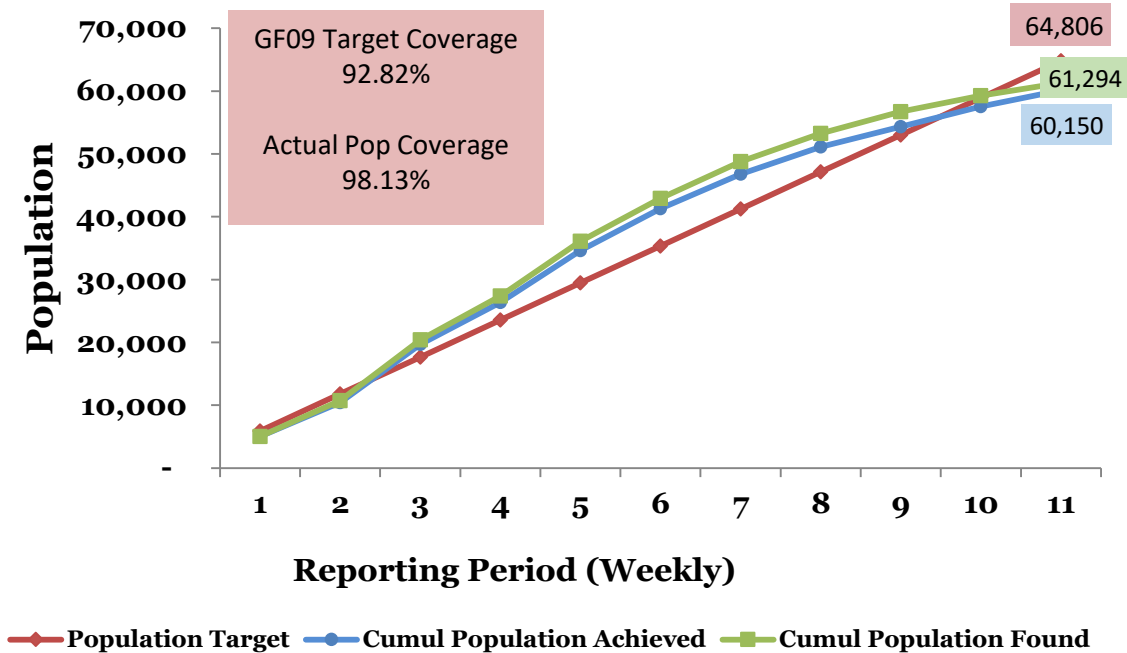
GF09: Structures Covered by IRS in Sissala East

May 2017 - July 2017



GF09: Population Covered by IRS in Sissala East

May 2017 - July 2017



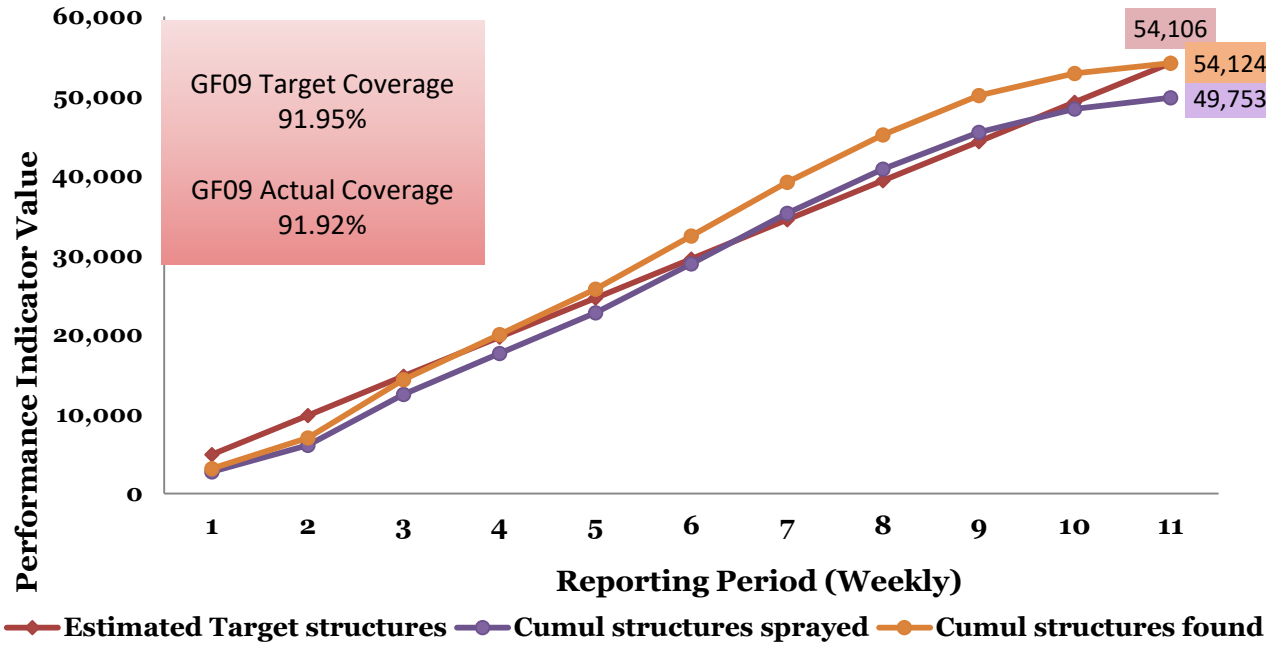
- At the end of the season, 98.05% field coverage was achieved.
- GF target coverage achieved was 89.22%.
- At the end of the season, the total number of can refills made was 7,680L

- At the end of the season, the population covered in the district was 60,150 (47.88% males and 52.12% females). Thus 92.82% of GF total population (N=64,806) targeted for IRS was covered in the district.
- Out of a total of 31,349 females covered by IRS, 4.04% were pregnant.
- 15.87% of the total population covered was under the age of 5 years

Sissala West

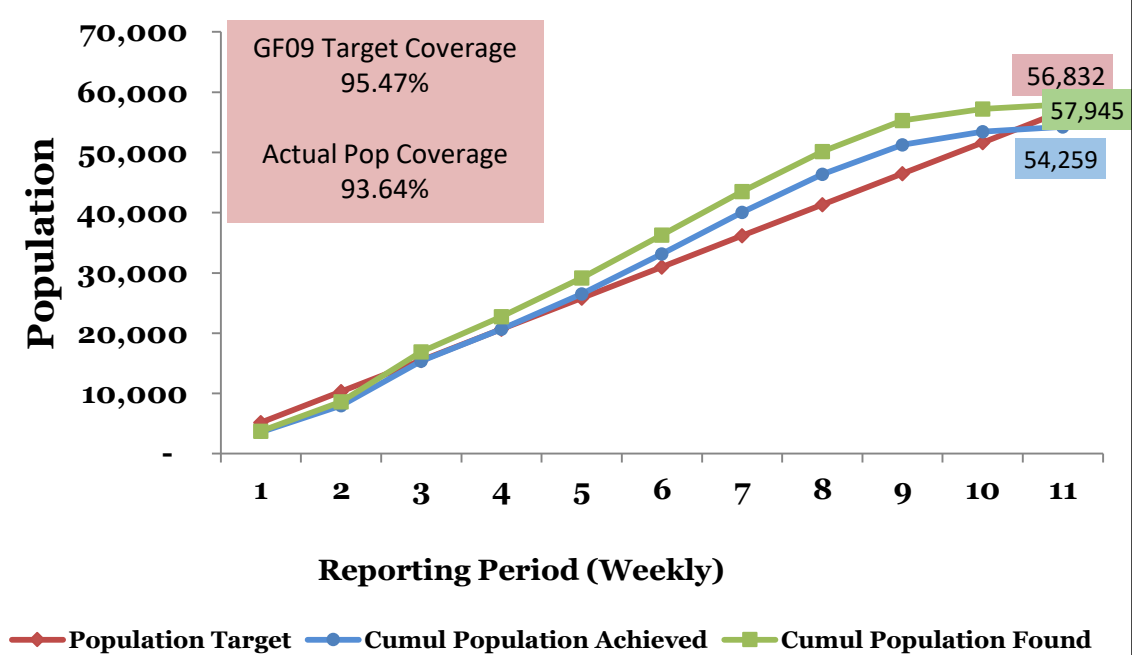
GF09: Structures Covered by IRS in Sissala West

May 2017 - July 2017



GF09: Population Covered by IRS in Sissala West

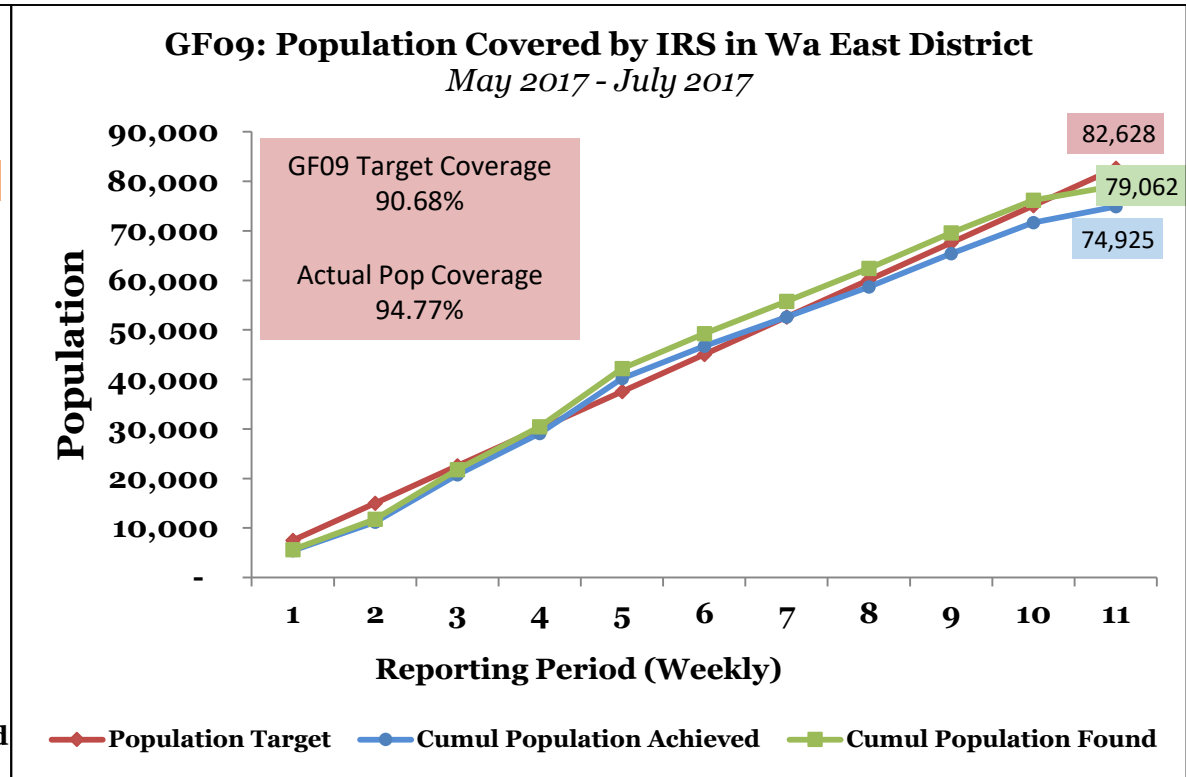
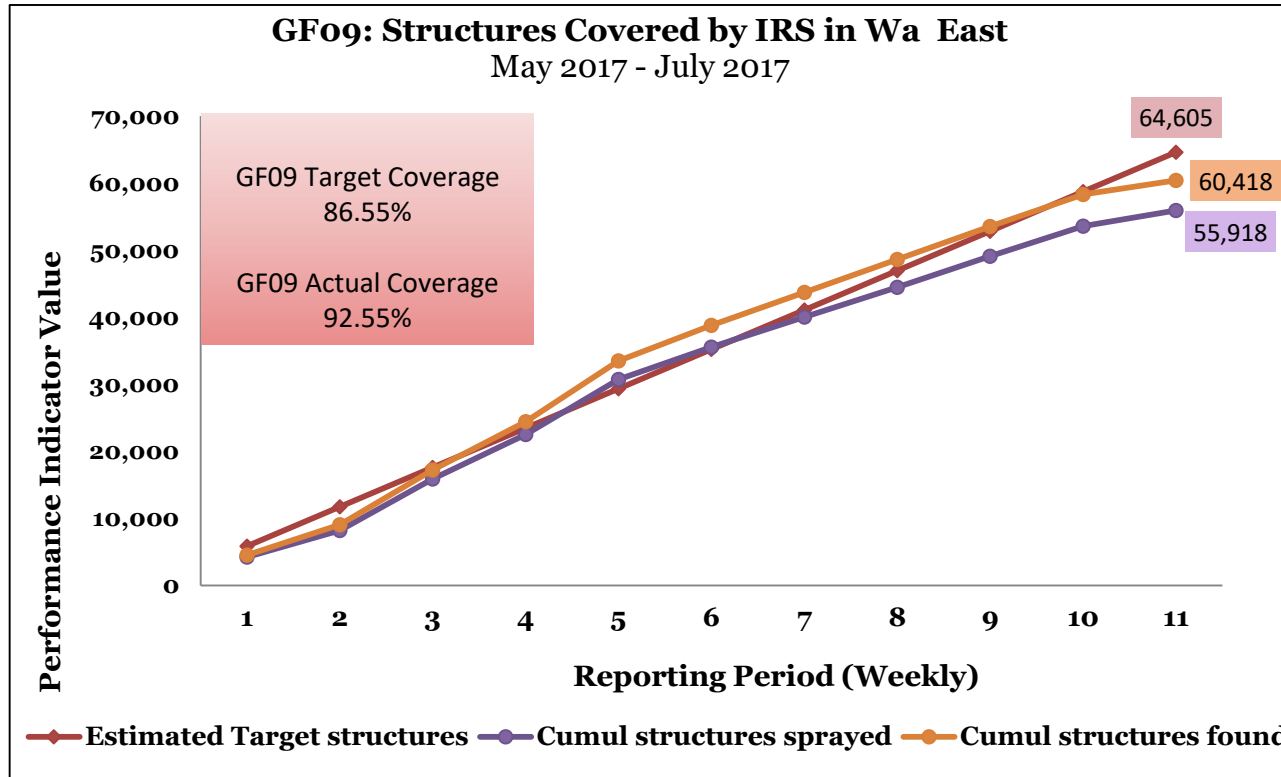
May 2017 - July 2017



- At the end of the season, 91.92% field coverage was achieved.
- GF target coverage achieved was 91.95%.
- At the end of the season, the total number of can refills made was 8,968L

- At the end of the season, the population covered in the district was 54,259 (49.84% males and 50.16% females). Thus 95.47% of GF total population (N=56,832) targeted for IRS was covered in the district.
- Out of a total of 27,219 females covered by IRS, 3.60% were pregnant
- 15.29% of the total population covered was under the age of 5 years

Wa East



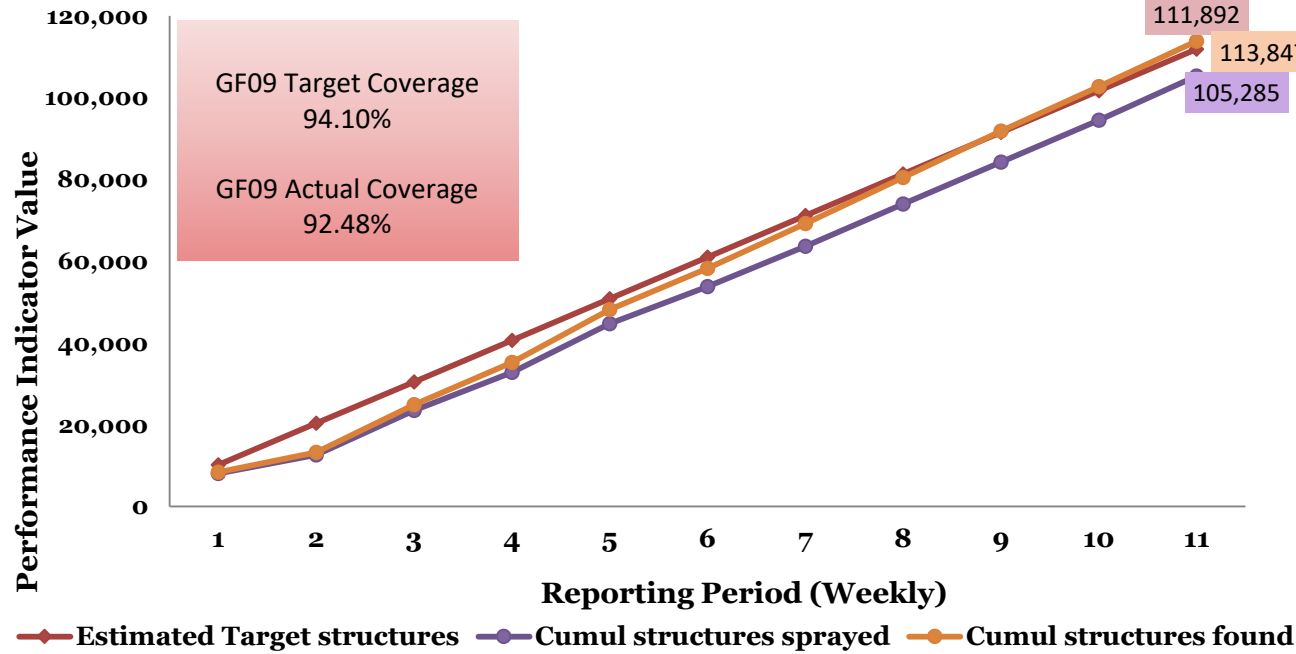
- At the end of the season, 92.55% field coverage was achieved.
- GF target coverage achieved was 86.55%.
- At the end of the season, the total number of can refills made was 9,074L

- At the end of the season, the population covered in the district was 74,925 (50.21% males and 49.79% females). Thus 90.68% of GF total population (N=82,628) targeted for IRS was covered in the district.
- Out of a total of 37,302 females covered by IRS, 3.28% were pregnant
- 13.53% of the total population covered was under the age of 5 years

Wa Municipal

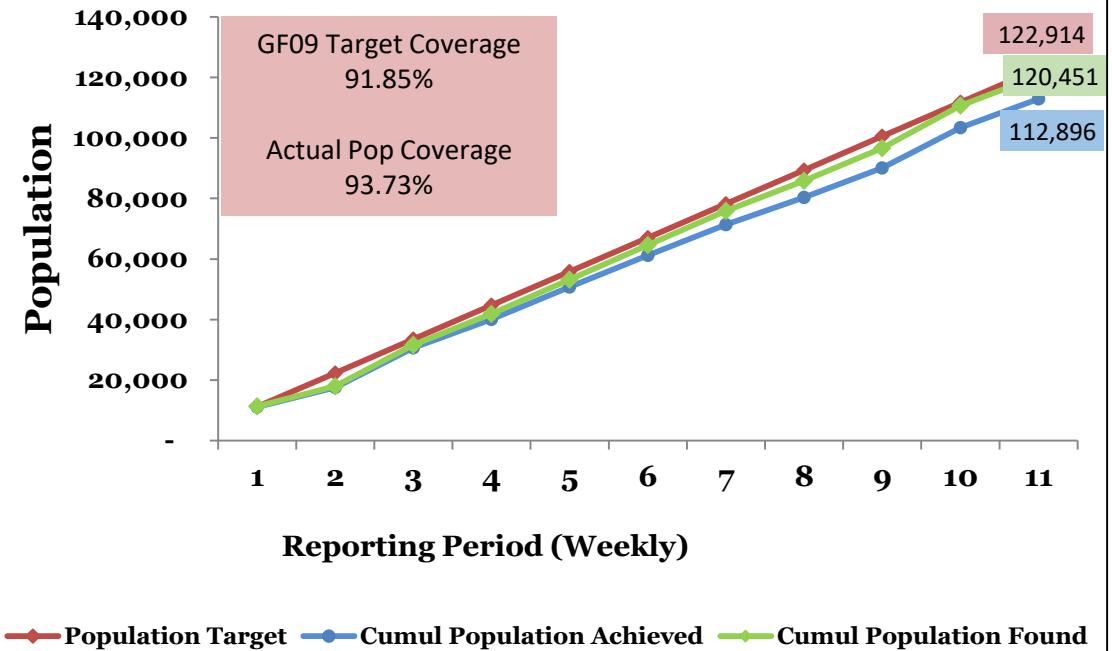
GF09: Structures Covered by IRS in Wa Municipal

May 2017 - July 2017



GF09: Population Covered by IRS in Wa Municipal

May 2017 - July 2017

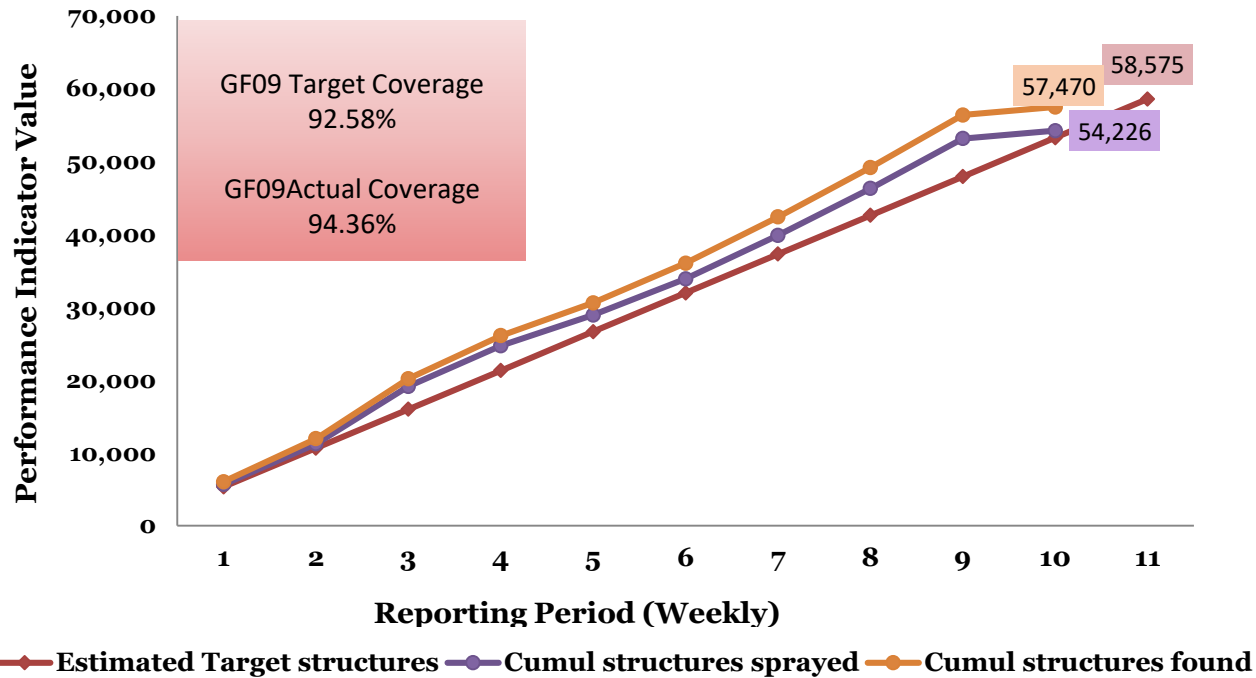


- At the end of the season, 92.48% field coverage was achieved.
- GF target coverage achieved was 94.10%.
- At the end of the season, the total number of can refills made was 16,159L

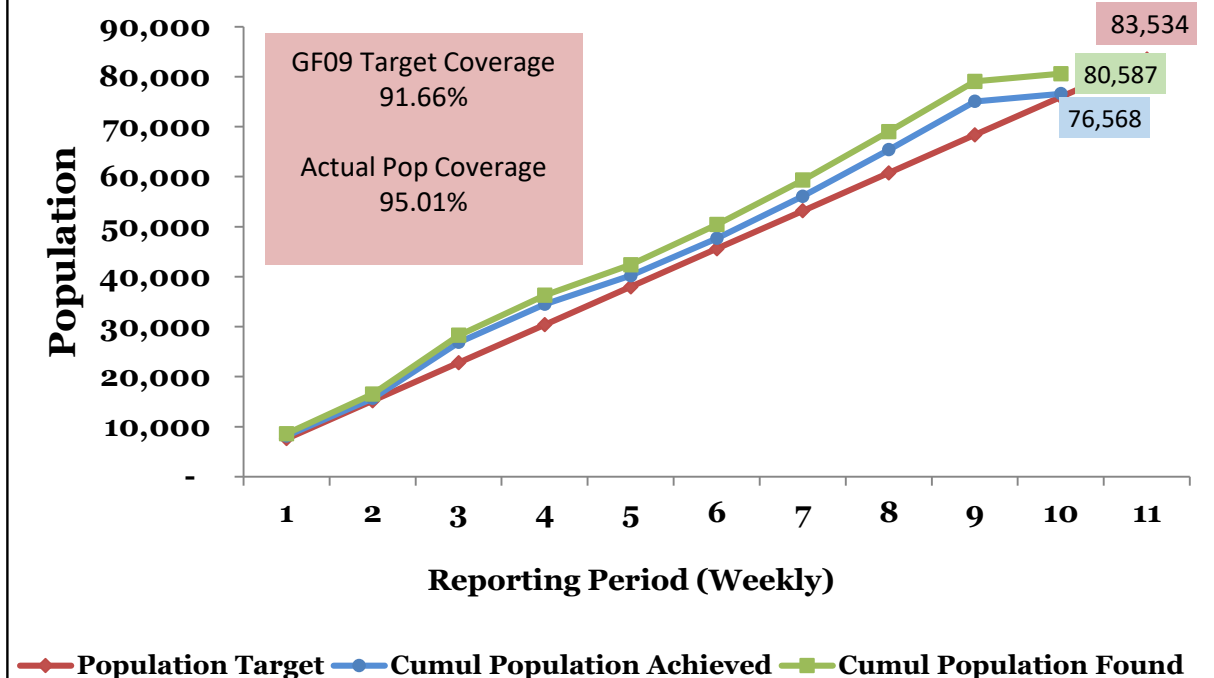
- At the end of the season, the population covered in the district was 112,896 (49.05% males and 50.95% females). Thus 91.85% of GF total population (N=122,914) targeted for IRS was covered in the district.
- Out of a total of 57,521 females covered by IRS, 3.12% were pregnant
- 14.01% of the total population covered was under the age of 5 years

Wa West

GF09: Structures Covered by IRS in Wa West
May 2017 - July 2017



GF09: Population Covered by IRS in Wa West District
May 2017 - July 2017

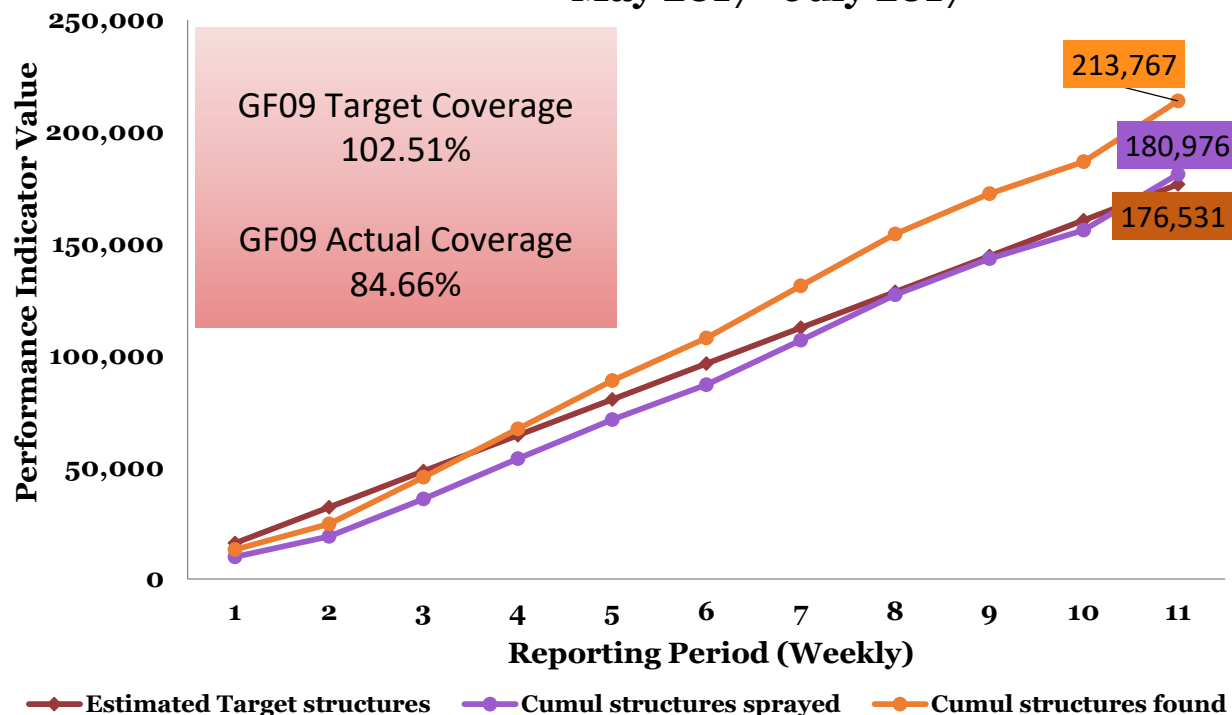


- At the end of the season, 94.36% field coverage was achieved.
- GF target coverage achieved was 92.58%.
- At the end of the season, the total number of can refills made was 8,637L

- At the end of the season, the population covered in the district was 76,568 (48.67% males and 51.33% females). Thus 91.66% of GF total population (N=91,521) targeted for IRS was covered in the district.
- Out of a total of 39,305 females covered by IRS, 2.58% were pregnant.
- 12.20% of the total population covered was under the age of 5 years

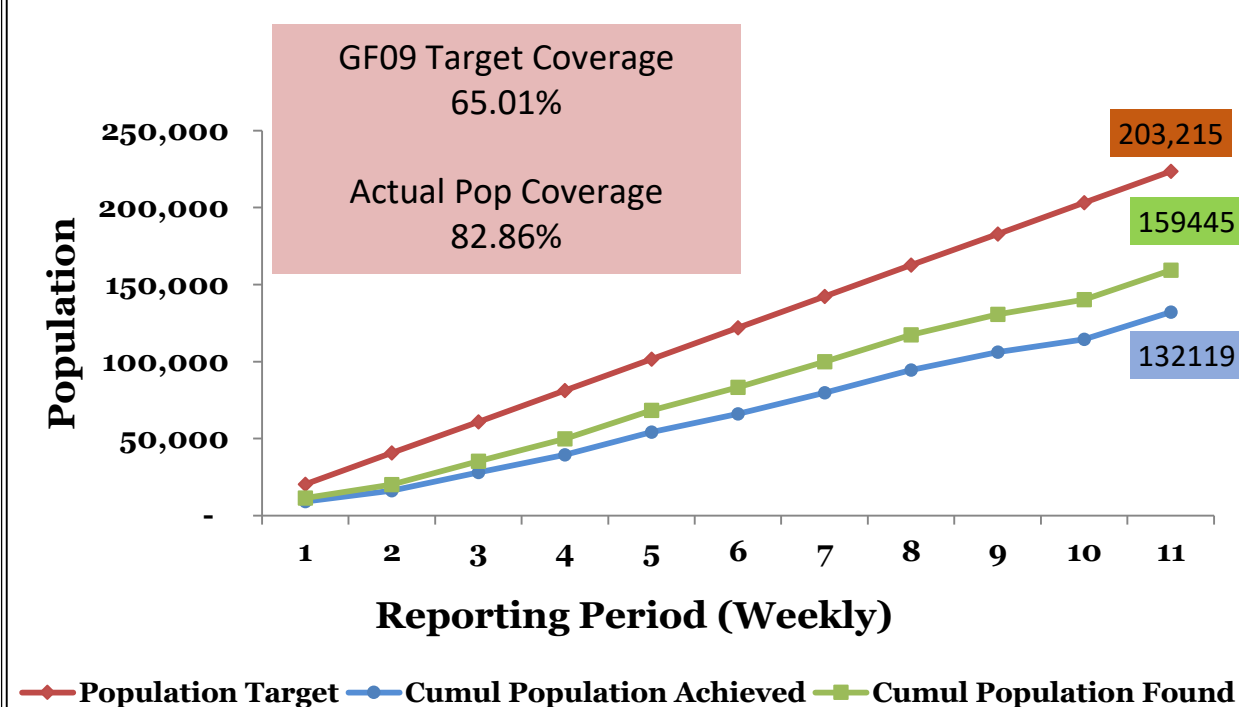
OBUASI MUNICIPAL

Obuasi Municipal IRS Performance Tracker
May 2017 - July 2017



- At the end of the week, 84.66% field coverage was achieved.
- GF target coverage achieved was 102.51%.
- At the end of the week, the total number of can refills made was 26637.

GF09: Population Covered by IRS in Obuasi Municipal
May 2017 - July 2017



- At the end of the week, the population covered in the municipality was 132119 (48.64% males and 51.36% females). Thus 65.01% of GF total population (N=203,215) targeted for IRS was covered in the municipality.
- Out of a total of 67858 females covered by IRS, 2.45% were pregnant
- 12.47% of the total population covered was under the age of 5 years